



Artist Statement

Virginia Clay

I began my creative pursuits with the desire to become a metalsmith. Jewelry has fascinated me my whole life and it only seemed natural that this passion should manifest itself in my creative endeavors. However, I had not counted on a love for textiles that took me the first moment I applied thickened dye to fabric. It is the meeting of these two fascinations that has created the framework for my pieces.

My inspiration comes from a variety of sources, but the natural world is the central theme for these works. Specifically, I focus on the forms related to foliage. Leaves, flowers, and stems are the shapes from which I create the patterns and objects in my work. Nature has spent thousands of years perfecting the elegance of its plant life; and in my work, I continue to explore and glorify it through these interpretations.

	<u>Title</u>	<u>Media</u>	<u>Original Format</u>
Figure 1:	Buckle Purse	Fibers, Metalsmithing	Dyed and printed rayon, wool felt, cast bronze, and forged steel; 11in X 9in
Figure 2:	Buckle Purse, view #2	Fibers, Metalsmithing	Dyed and printed rayon, wool felt, cast bronze, and forged steel; 11in X 9in
Figure 3:	Buckle Purse, detail	Fibers, Metalsmithing	Dyed and printed rayon, wool felt, cast bronze, and forged steel; 11in X 9in
Figure 4:	Buckle Purse, detail #2	Fibers, Metalsmithing	Dyed and printed rayon, wool felt, cast bronze, and forged steel; 11in X 9in
Figure 5:	Button Purse	Fibers, Metalsmithing	Dyed and printed rayon, wool felt, cast bronze, and forged steel; 7in X 10in
Figure 6:	Button Purse, view #2	Fibers, Metalsmithing	Dyed and printed rayon, wool felt, cast bronze, and forged steel; 7in X 10in
Figure 7:	Button Purse, detail	Fibers, Metalsmithing	Dyed and printed rayon, wool felt, cast bronze, and forged steel; 7in X 10in
Figure 8:	Button Purse, detail #2	Fibers, Metalsmithing	Dyed and printed rayon, wool felt, cast bronze, and forged steel; 7in X 10in
Figure 9:	Flower Purse	Fibers, Metalsmithing	Dyed and printed rayon, wool felt, cast bronze, and forged steel; 7in X 12in
Figure 10:	Flower Purse, view #2	Fibers, Metalsmithing	Dyed and printed rayon, wool felt, cast bronze, and forged steel; 7in X 12in
Figure 11:	Flower Purse, detail	Fibers, Metalsmithing	Dyed and printed rayon, wool felt, cast bronze, and forged steel; 7in X 12in
Figure 12:	Orange Blackwork	Fibers	Fiber reactive dyed and printed rayon and cotton, 4ft x 6ft
Figure 13:	Orange Blackwork, detail	Fibers	Fiber reactive dyed and printed rayon and cotton, 4ft x 6ft
Figure 14:	Purple Blackwork	Fibers	Fiber reactive dyed and printed rayon and cotton, 4ft x 6ft
Figure 15:	Purple Blackwork, detail	Fibers	Fiber reactive dyed and printed rayon and cotton, 4ft x 6ft

Figure 16:	Red Blackwork	Fibers	Fiber reactive dyed and printed rayon and cotton, 4ft x 6ft
Figure 17:	Red Blackwork, detail	Fibers	Fiber reactive dyed and printed rayon and cotton, 4ft x 6ft
Figure 18:	Yellow Blackwork	Fibers	Fiber reactive dyed and printed rayon and cotton, 4ft x 6ft
Figure 19:	Yellow Blackwork, detail	Fibers	Fiber reactive dyed and printed rayon and cotton, 4ft x 6ft
Figure 20:	Amethyst Leaf Earrings	Metalsmithing	Sterling silver, brass, and amethyst; 1/2in x 3in
Figure 21:	Fire Opal Leaf Earrings	Metalsmithing	Sterling silver and fire opal; 1in x 2in
Figure 22:	Topaz Leaf Earrings	Metalsmithing	Sterling silver and blue topaz; 1/2in x 3in
Figure 23:	Flower Lariat	Metalsmithing	Sterling silver, blue topaz, and green topaz; 1in x 18in
Figure 24:	Flower Lariat, detail	Metalsmithing	Sterling silver, blue topaz, and green topaz; 1in x 18in
Figure 25:	Flower Pin	Metalsmithing	Sterling silver, steel, and created blue star sapphire; 2in x 3 1/2in
Figure 26:	Flower Pin, view #2	Metalsmithing	Sterling silver, steel, and created blue star sapphire; 2in x 3 1/2in
Figure 27:	Flower Pin, detail	Metalsmithing	Sterling silver, steel, and created blue star sapphire; 2in x 3 1/2in
Figure 28:	Teapot	Metalsmithing	Steel and brass; 6in x 6 1/2in x 6in
Figure 29:	Teapot, view #2	Metalsmithing	Steel and brass; 6in x 6 1/2in x 6in
Figure 30:	Teapot, detail	Metalsmithing	Steel and brass; 6in x 6 1/2in x 6in



Figure 1: Buckle Purse.



Figure 2: Buckle Purse, view #2.



Figure 3: Buckle Purse, detail.



Figure 4: Buckle Purse, detail #2.



Figure 5: Button Purse.



Figure 6: Button Purse, view #2.



Figure 7: Button Purse, detail.



Figure 8: Button Purse, detail #2.



Figure 9: Flower Purse.



Figure 10: Flower Purse, view #2.



Figure 11: Flower Purse, detail.



Figure 12: Orange Blackwork.



Figure 13: Orange Blackwork, detail.



Figure 14: Purple Blackwork.

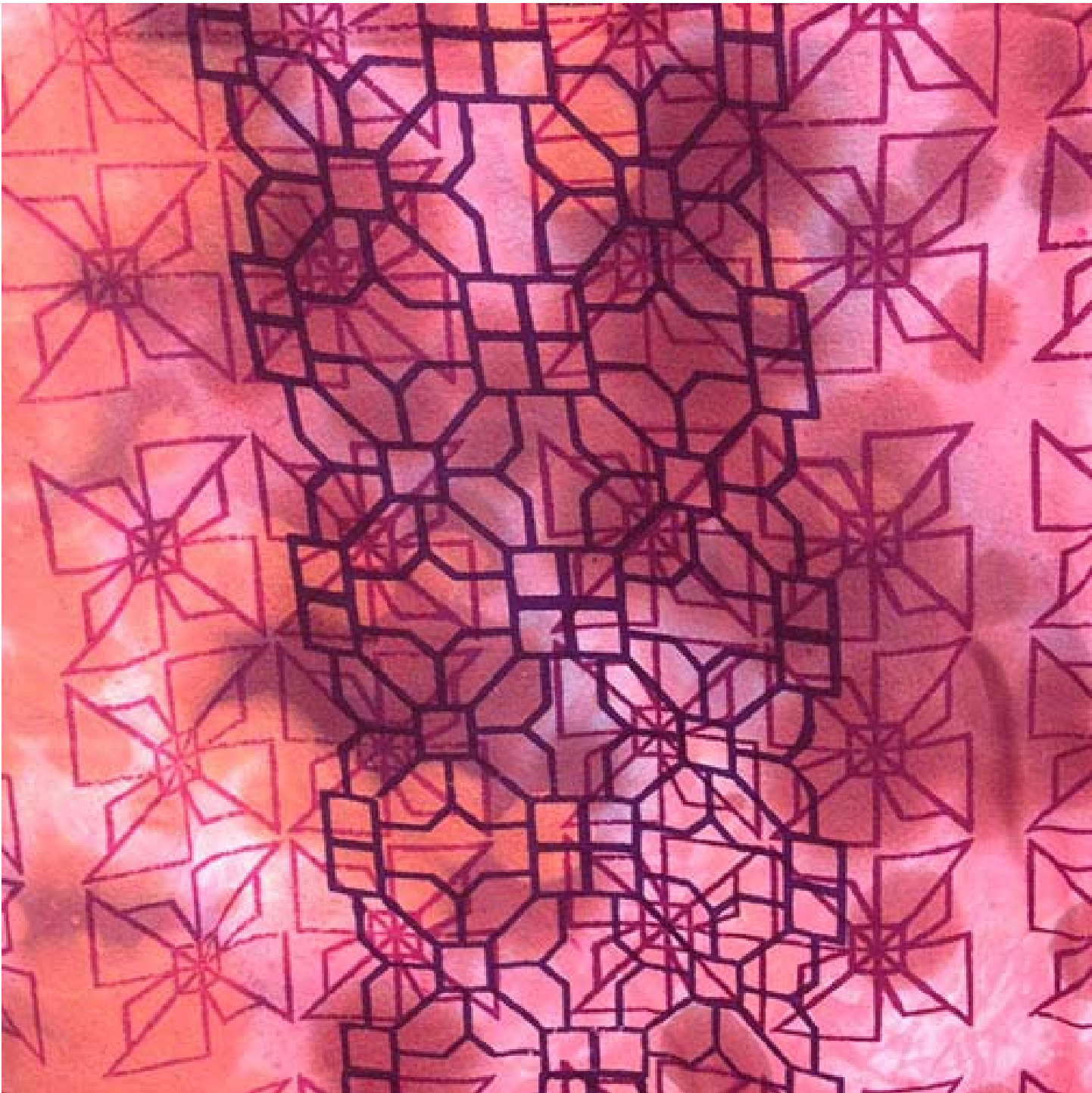


Figure 15: Purple Blackwork, detail.



Figure 16: Red Blackwork.

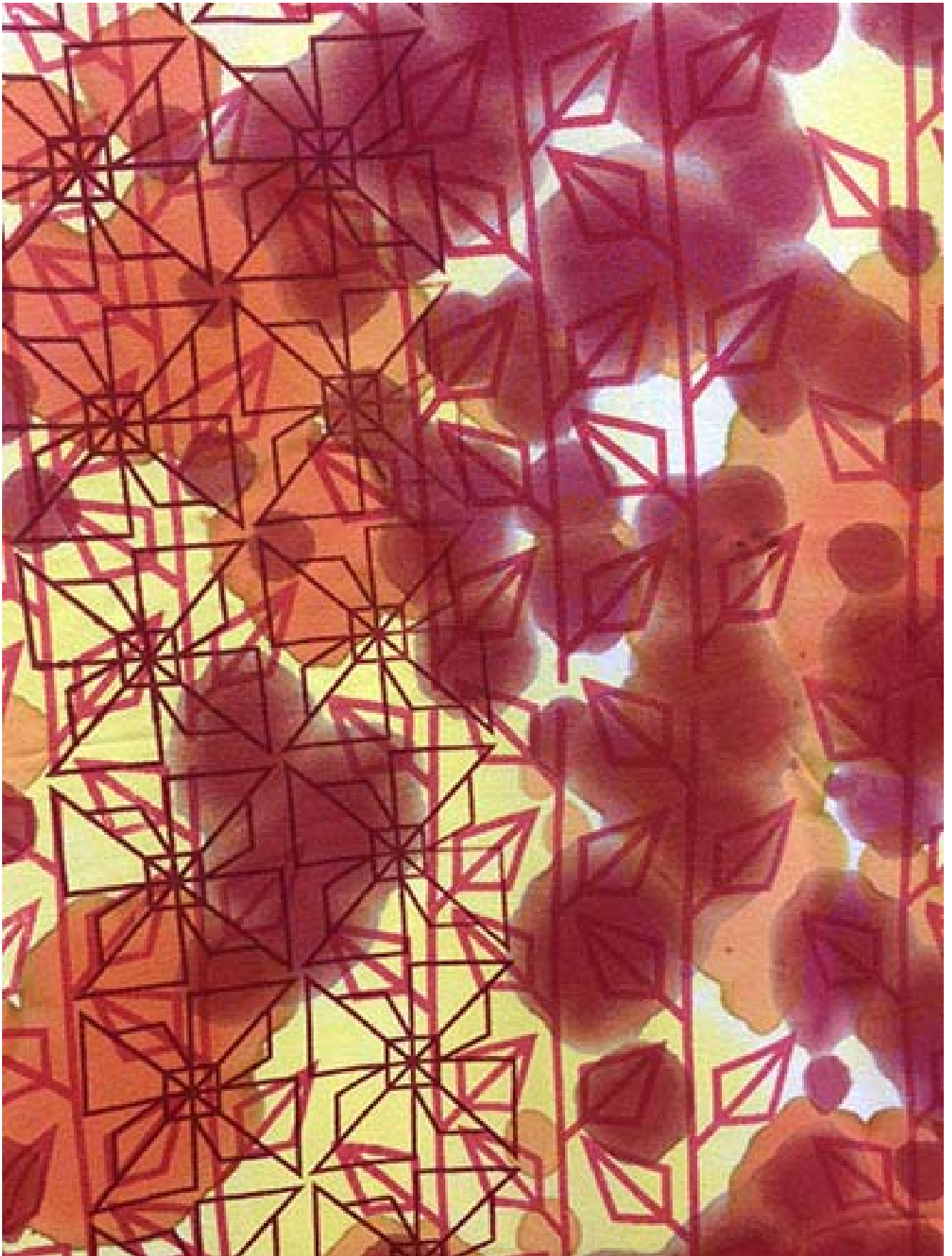


Figure 17: Red Blackwork, detail.



Figure 18: Yellow Blackwork.

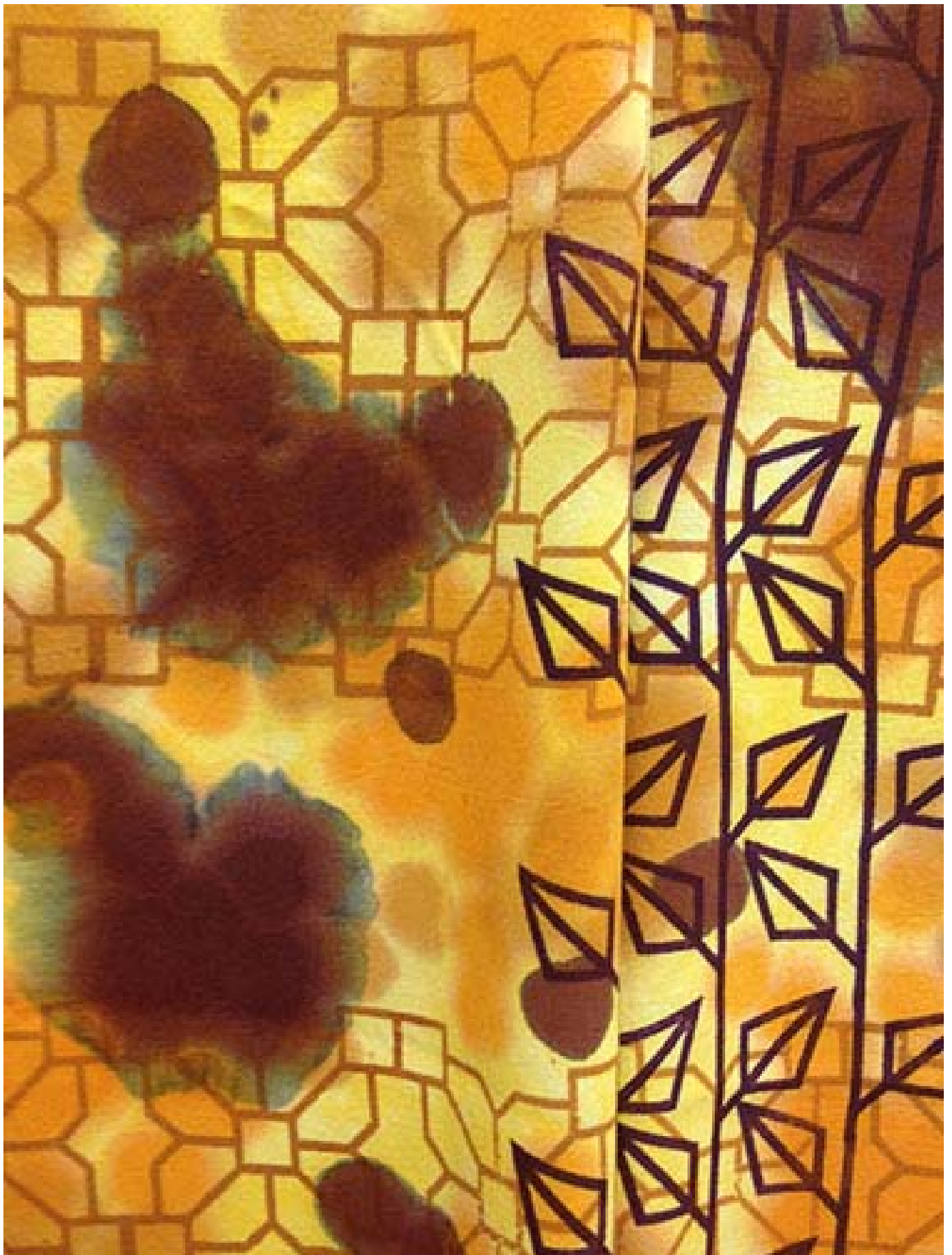


Figure 19: Yellow Blackwork, detail.



Figure 20: Amethyst Leaf Earrings.



Figure 21: Fire Opal Leaf Earrings.



Figure 22: Topaz Leaf Earrings.



Figure 23: Flower Lariat.



Figure 24: Flower Lariat, detail.



Figure 25: Flower Pin.



Figure 26: Flower Pin, view #2.



Figure 27: Flower Pin, detail.



Figure 28: Teapot.



Figure 29: Teapot, view #2.

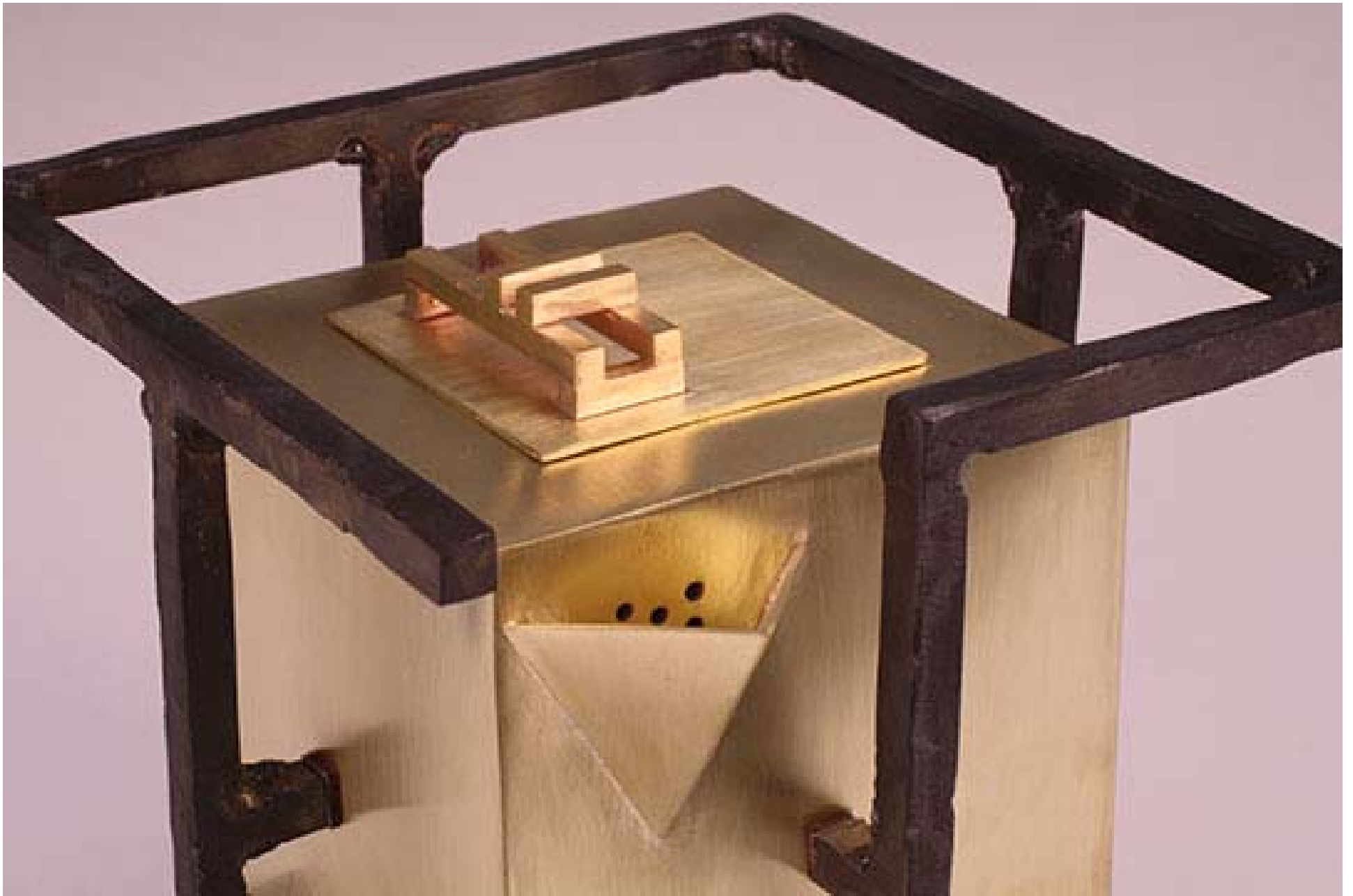


Figure 30: Teapot, detail.