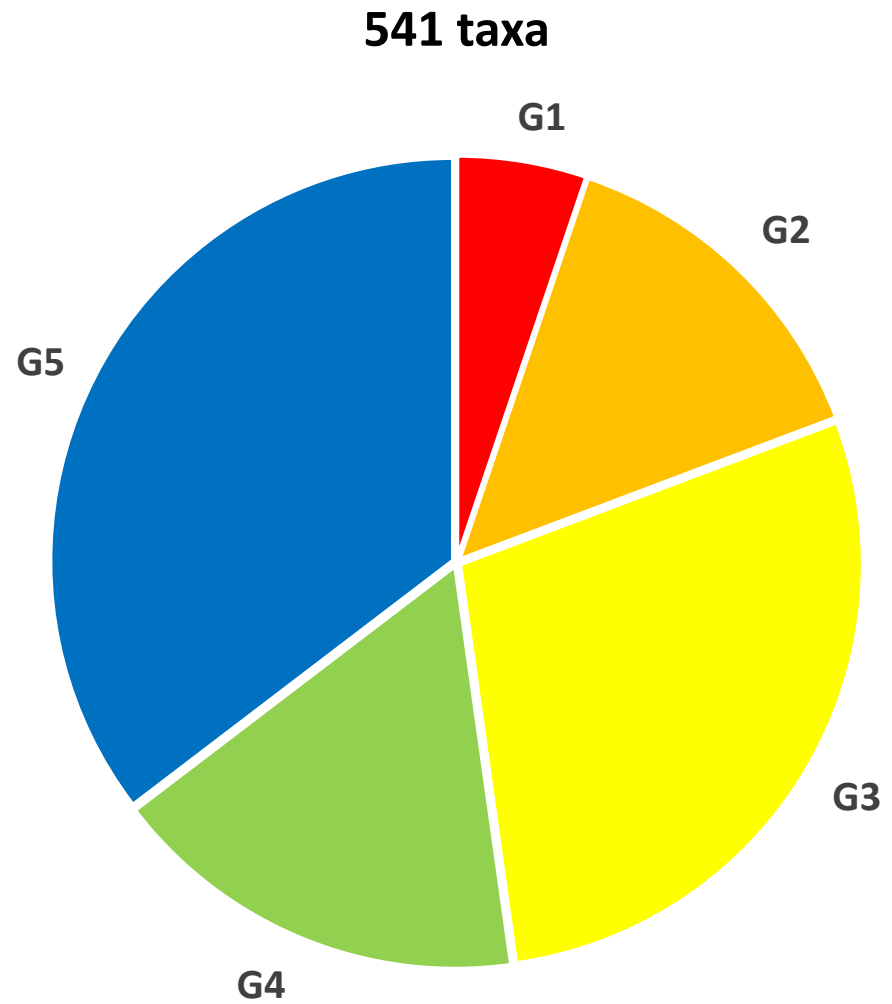


CNHP
Vascular
Plant
Tracking List



CNHP Tracking List Additions 2023

G2

Name	Common Name	Rank
<i>Boechera quadrangulensis</i>	Four Corners Rockcress	G2? S1
<i>Carex holmgreniorum</i>	Parry's Sedge	G1G3 S1
<i>Carex utahensis</i>	Utah Sedge	G2G3 S1
<i>Cirsium culebraense</i>	Culebra Thistle	G2 S2
<i>Draba pectinipila</i>	Wyoming Whitlow-grass	G1G3 S1
<i>Primula pauciflora</i> var. <i>zionense</i>	Zion Shootingstar	G5T2T3 S1



CNHP Tracking List Additions 2023

G3

Name	Common Name	Rank
<i>Bromus mucroglumis</i>	Arizona Brome	G3? S1
<i>Mentzelia uintahensis</i>	Uintah Blazingstar	G3 S3
<i>Oreocarya paradoxa</i>	Paradox Valley Cryptantha	G3G4 S3
<i>Phacelia deserta</i>	Desert Phlox	G4T3 S3



CNHP Tracking List Additions 2023

G4 or G5

Name	Common Name	Rank
<i>Argyrochosma limitanea</i>	Southwestern False Cloak Fern	G4G5 S1
<i>Disakisperma dubia</i>	Green Sprangletop	G5 S1
<i>Muhlenbergia repens</i>	Creeping Muhly	G4 S1
<i>Salix famelica</i>	Starved Willow	G5 S1



CNHP Tracking List Additions 2023

Carex holmgreniorum G1G3 S1

Draba pectinipila G1G3 S1

Phacelia deserta G4T3 S3

Primula pauciflora var. *zionense* G5T2T3 S1

Salix famelica G5 S1

Argyrochosma limitanea G4G5 S1

Carex utahensis G2G3 S1

Mentzelia uintahensis G3 S3

Oreocarya pustulosa G3G4 S3

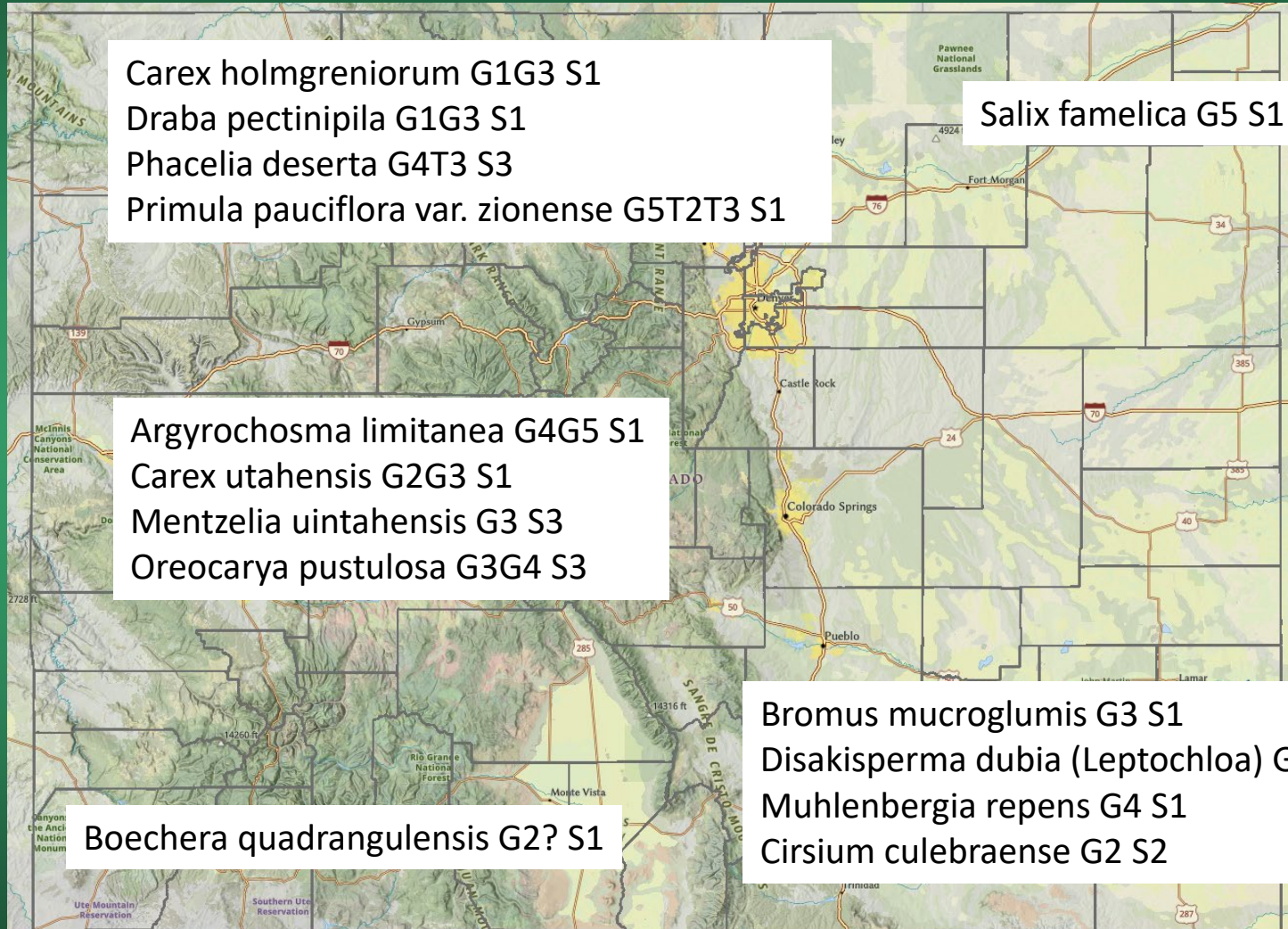
Bromus mucroglumis G3 S1

Disakisperma dubia (*Leptochloa*) G5 S1

Muhlenbergia repens G4 S1

Cirsium culebraense G2 S2

Boechera quadrangulensis G2? S1



CNHP Tracking List Additions Coming Soon.....

Inventory Needs and Areas of Botanical Significance on the Colorado Plains



Susan Panjabi and Karin Decker
March 2020

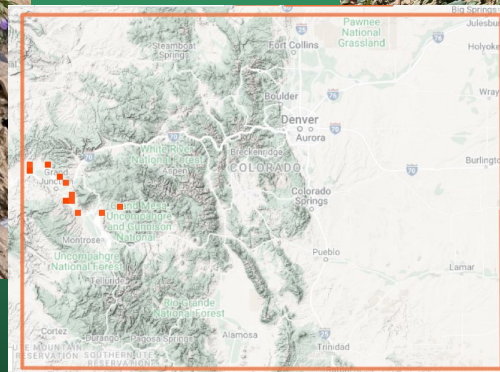
~100 G4 or G5 taxa to evaluate
(~ 80 from plains, 30 currently
on watchlist)

~40 G3 taxa to evaluate
most with no S rank



Removed from CNHP Tracking List 2023

Phacelia splendens – Patch Phacelia
was G3 S3 --- now G4 S4



Removed from CNHP Tracking List 2023

Aquilegia micrantha var. *mancosana*

G5T1Q S1

spurless mutant of *A. micrantha* per Weber 2012

Nitrophila occidentalis

G5 S1

waif per Weber 2012

Astragalus albulus

G3 S1

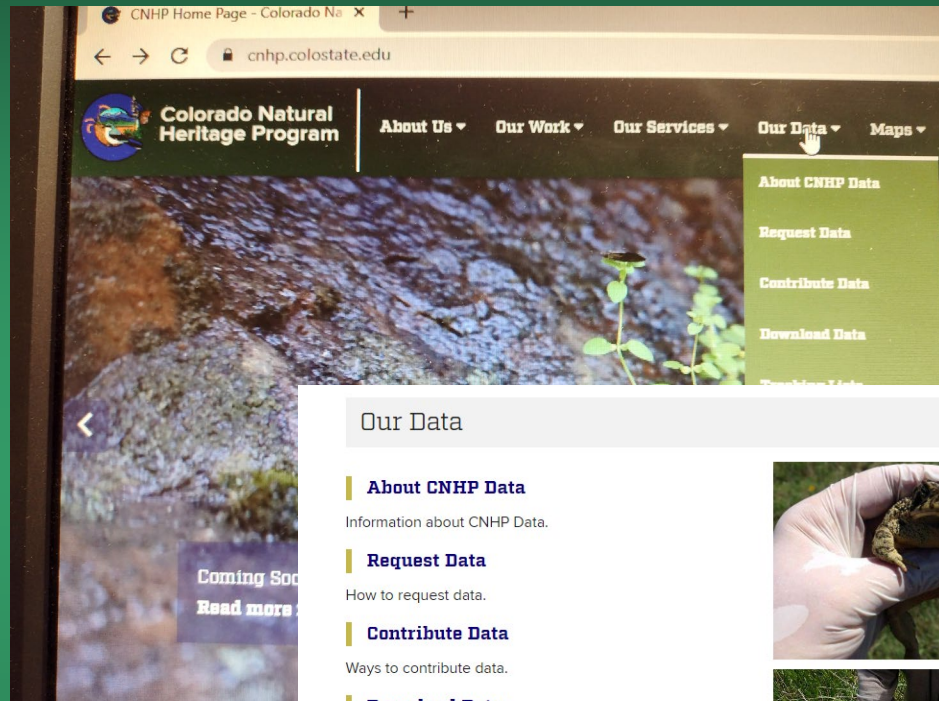
not documented in Colorado, specimens annotated



Contribute Data – CNHP website

* = Species, Date, Location, Observer, Email

Count, Threats

A screenshot of the 'Plant Element Occurrence Field Form' on the CNHP website. The form is titled 'Plant Element Occurrence Field Form' and includes a link to the 'Element Tracking List'. It contains several input fields for user information: 'Element Scientific Name', 'Observer Name', 'Survey Date', 'Observer', 'Affiliation', 'Observer Phone', 'Observer Email', 'Observer', 'Address', 'City', and 'State/Zip'. There is a section for 'Ownership' with checkboxes for 'Private', 'USFS', 'BLM', 'State', 'Military', 'Indian', 'BuRec', 'NPS', and 'Other'. Below this is a section for 'Owner Name' and 'Owner Comments'. The 'Location Information' section is marked as '(Required)' and includes a 'Choose File' button for uploading a map scan. A note at the bottom states: '(Please submit at minimum, either a full Legal Description, or Driving/Hiking Directions.)'.

Contribute Data - iNaturalist

The image is a collage of three screenshots from the iNaturalist website, illustrating how to contribute data.

The top-left screenshot shows a user profile for 'georgiadoylecnhp'. A dropdown menu is open, showing options: 'People', 'Projects', 'Journal Posts', 'Forum', and 'Your Recent Projects'. The 'Colorado Natural Heritage P...' project is highlighted.

The top-right screenshot shows the 'Projects' page. It features a large image of a spotted crab with the text 'Crabs of the World' overlaid. Below the image is a search bar with the text 'colorado natural heritage program' and a 'Go' button.

The bottom screenshot shows the 'Search Projects' results. It lists two projects:

- Colorado Natural Heritage Program**: Help the Colorado Natural Heritage Program document Colorado's remarkable plant and animal diversity!
- Flora of Colorado**: The purpose of this project is to document the flora of Colorado and provide an educational tool for novices and experts alike to explore the diversity and beauty of Colorado's plant species. This project is administered by the Colorado Natural Heritage Program at Colorado State University.

[« Colorado Natural Heritage Program](#)

Join Colorado Natural Heritage Program?

About this Project

Help the Colorado Natural Heritage Program document Colorado's remarkable plant and animal diversity!

Project Curators



[a_schuhmann](#)
0 observations



[georgiadoylecnp](#)
12 observations



[pamsmithcnp](#)
0 observations

Rules for Adding Observations

- must be observed in Colorado, US
- must have quality grades: research

Other



Receive updates from this project

Receive updates about this project on your dashboard and in the daily updates email.

Trust this project with hidden coordinates?

Granting access to your hidden coordinates will allow the managers of this project to see the true, unobscured location of your observations in this project. This is extremely important in situations where scientists or resource managers need access to exact coordinates for analysis and decision-making.



No



Yes, for any of my observations

This includes observations where you have set the geoprivacy to "obscured" or "private," e.g. observations from your backyard or spots you don't want other people to know about.



Yes, but only for my observations of threatened taxa, not when I've set the geoprivacy

Many projects just need access to coordinates that are obscured because the observation depicts a threatened taxon.

Please Be Careful!

Coordinate access is important for scientists, but can also be abused by poachers. Make sure you trust all the project curators before trusting this project.

Yes, I want to join

Cancel

Data questions?

georgia.doyle@colostate.edu

Argyrochosma limitanea

Photo by Lorraine Yeatts



CNHP Vascular Plant Tracking List

