

# PYCH

S  
U  
Z  
U  
K  
I  
  
&  
  
T  
H  
E  
  
F  
I  
D  
D  
L  
E  
R



*Summer Violin Camp*  
*June 10th @ 8:30 am - June 12th @ 2:00 pm*  
*St. John's Lutheran Church, 305 East Elizabeth*  
*Street, Fort Collins, CO 80524*



*PROJECT YOUTH and*  
*CHAMBER MUSIC*

# An Artist Statement

Nick Hughes

My name is Nick Hughes and I am an aspiring graphic designer. I am 30 years old and am from Loveland, Colorado. Ever since elementary school, I knew that art was my favorite subject. Not only did I like art class the best, it was also the subject I was most praised for, with reading being a close second.

My objective is to turn my life-long passion for art into a sustaining career. My path in life hasn't been the easiest one. I was born to parents with substance abuse problems. At the age of seven my parents got divorced, and my mother's new partner made her addiction problems much worse. When I was ten and my little brother was three, we were taken into protective custody. For the rest of both of our youths my brother and I stayed in a foster home. The reason I bring this up is to illustrate my motivation to succeed. I am not ashamed of my past because it has taught me everything I have needed to know in my art and in my life. It has also taught me what I don't want in my life. My experiences show in my art, and these experiences have driven me to the brink of a Bachelor's degree. I am the first member of my whole extended family to attend a university, let alone graduate from one. I may have been able to achieve these goals in a different upbringing, yet I feel it wouldn't be as rewarding as what I feel from what I have achieved so far.

My desired career is one in graphic design, though I have a lot of talent in illustration and painting. Whether for a graphic design firm, or for my own freelance business, I want to incorporate all of my art talent and training into my work. I also aspire to use my experiences, my hard work, and my determination to create professional work and lasting memories for my clients.

	<u>Title</u>	<u>Media</u>	<u>Original Format</u>
<b>Figure 1:</b>	PYCH typeface development	Digital Illustration	Portrait, 11 in x 17 in
<b>Figure 2:</b>	PYCH Logos	Digital Illustration	Portrait, 11 in x 17 in
<b>Figure 3:</b>	PYCH Rack Card and Film Slide	Digital Illustration	Portrait, 11 in x 17 in
<b>Figure 4:</b>	PYCH Suzuki and the Fiddler Poster	Digital Illustration	Portrait, 11 in x 17 in
<b>Figure 5:</b>	Fu Manchu I pad composition	Graphite and charcoal drawings, Digital Illustration	Portrait, 11 in x 17 in
<b>Figure 6:</b>	The History of Writing Wall Display	Digital Illustration	Portrait, 11 in x 17 in
<b>Figure 7:</b>	Jackson Pollock Bar and Grill Sign Assortment	Ink and Acrylic, Digital Illustration	Landscape, 11 in x 17 in
<b>Figure 8:</b>	Jackson Pollock Virtual Menu	Digital Illustration	Landscape, 11 in x 17 in
<b>Figure 9:</b>	Jackson Pollock Flat Packaging Art	Ink and Acrylic, Digital Illustration	Landscape, 11 in x 17 in
<b>Figure 10:</b>	Jackson Pollock Packaging	Photographs of Printed Art on Existing Packaging	Landscape, 17 in x 11 in
<b>Figure 11:</b>	On Call in the Wild Magazine Spread	Charcoal Drawing, Digital Illustration	Landscape, 17 in x 11 in
<b>Figure 12:</b>	Midtown Business Branding Logos Original	Digital Illustration	Landscape, 17 in x 11 in
<b>Figure 13:</b>	Midtown Business Branding Logos	Digital Illustration	Landscape, 17 in x 11 in

apple chancery



PROJECT YOUTH &  
CHAMBER MUSIC

**COPPERGATE GOTHIC  
BOLD**



**PROJECT YOUTH &  
CHAMBER MUSIC**

CHARLEMAGNE STD  
BOLD



PROJECT YOUTH &  
CHAMBER MUSIC

Capture It 2



PROJECT YOUTH &  
CHAMBER MUSIC

Cardinal Regular



PROJECT YOUTH &  
CHAMBER MUSIC

Archer Semibold



PROJECT YOUTH &  
CHAMBER MUSIC

Handwriting Dakota



PROJECT YOUTH &  
CHAMBER MUSIC

Marker Felt Wide



PROJECT YOUTH &  
CHAMBER MUSIC

Baskerville Old Face



PROJECT YOUTH &  
CHAMBER MUSIC

Handwriting



PROJECT YOUTH &and  
CHAMBER MUSIC

**Figure 1: PYCH typeface development.**



*PROJECT YOUTH &  
CHAMBER MUSIC*



*PROJECT YOUTH and  
CHAMBER MUSIC*



*PROJECT YOUTH and  
CHAMBER MUSIC*

Figure 2: PYCH logos.

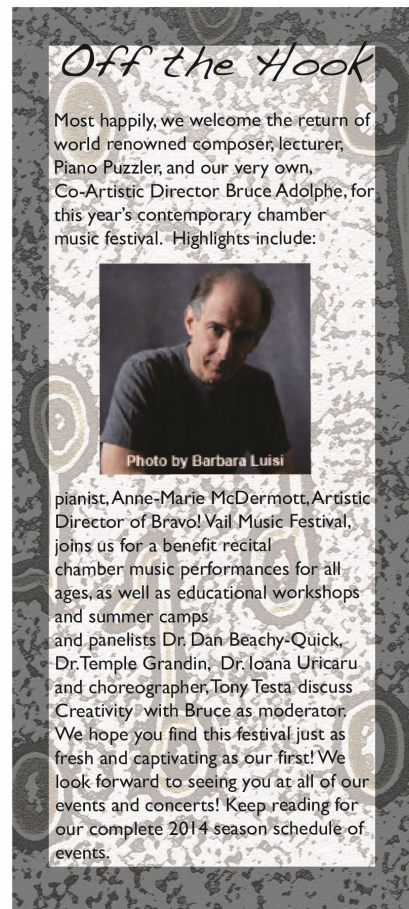
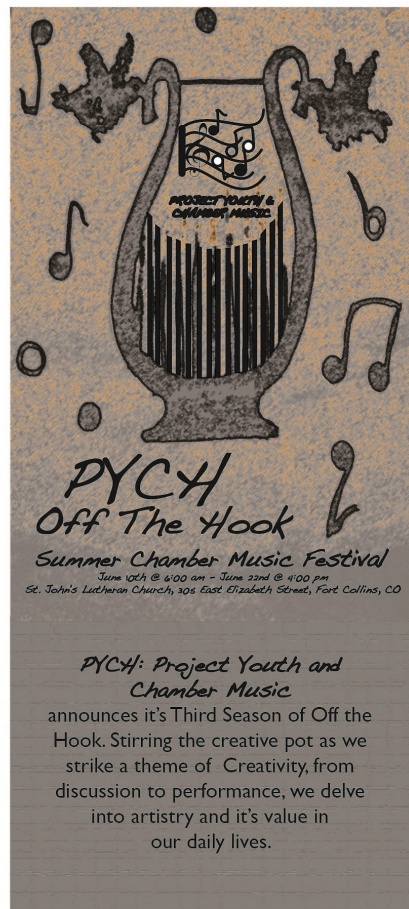


Figure 3: PYCH Rack Card and Film Slide.



Figure 4: PYCH Suzuki and the Fiddler Poster.

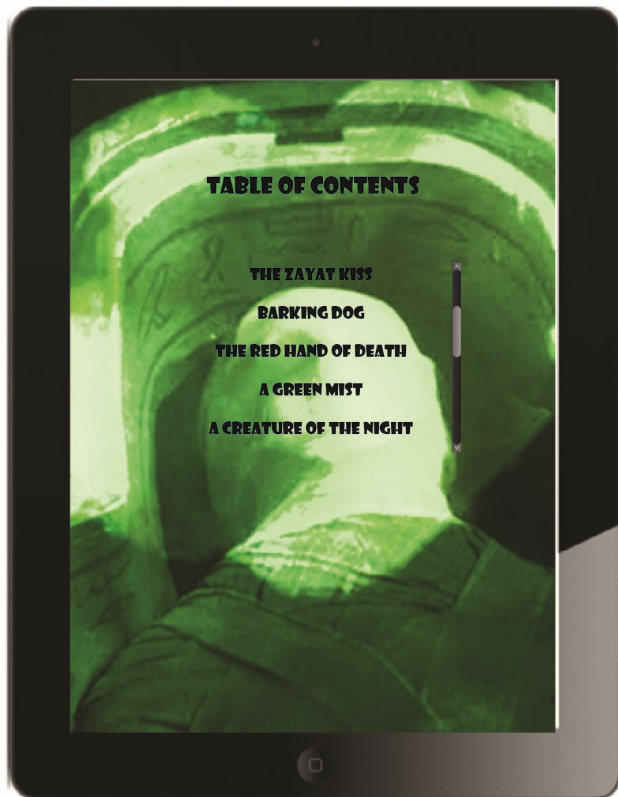
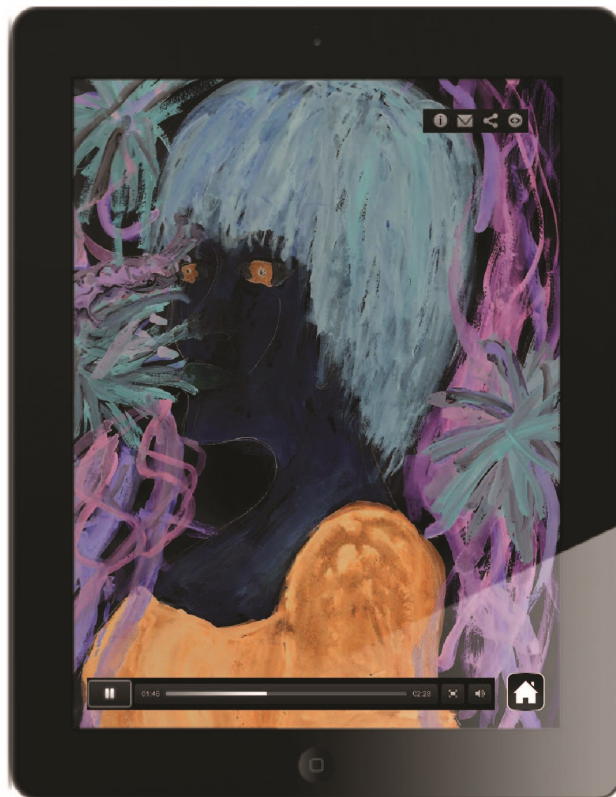
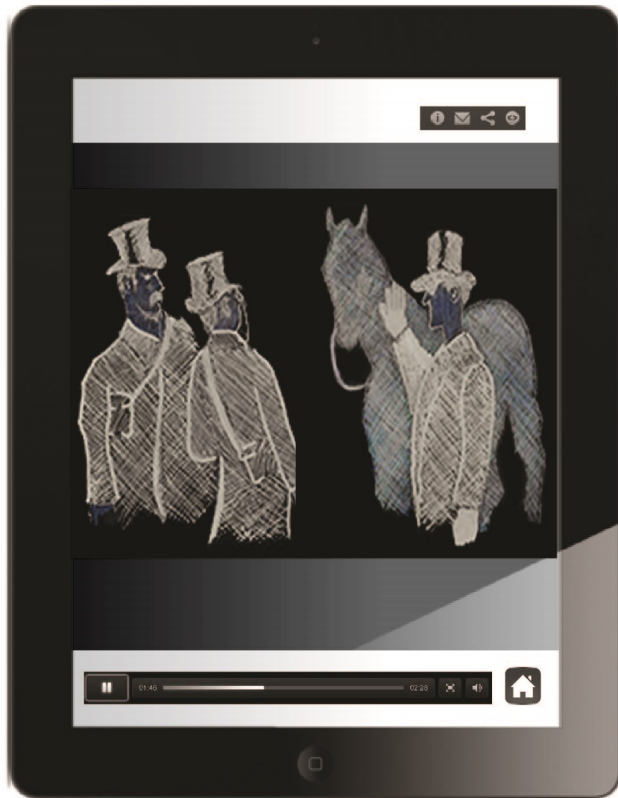
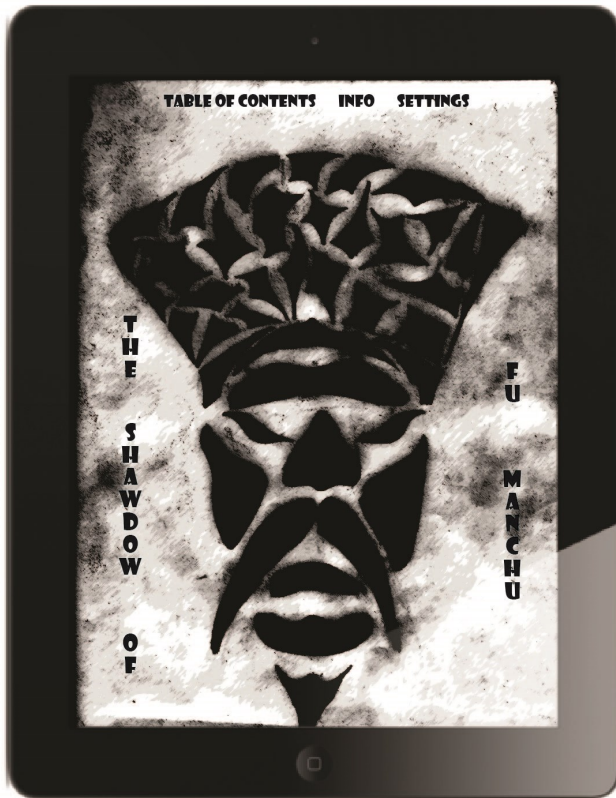


Figure 5: Fu Manchu I pad composition.



Figure 6: The History of Writing Wall Display.



Figure 7: Jackson Pollock Bar and Grill Sign Assortment.

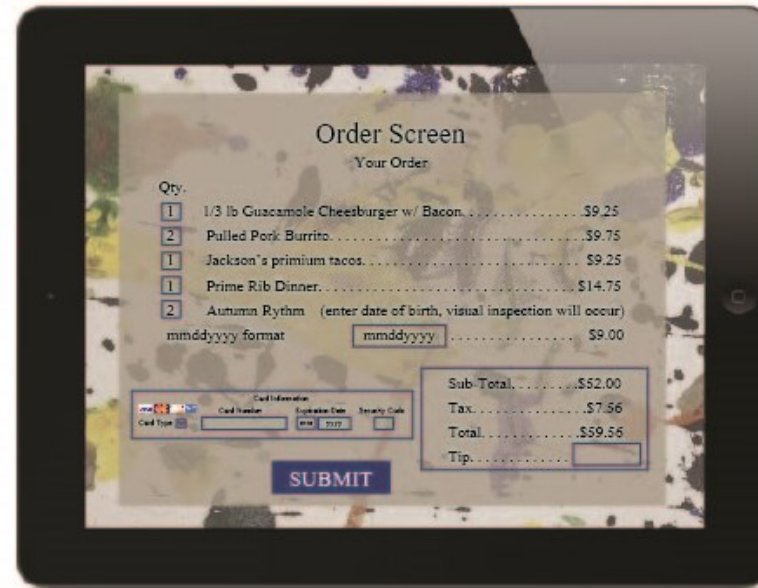
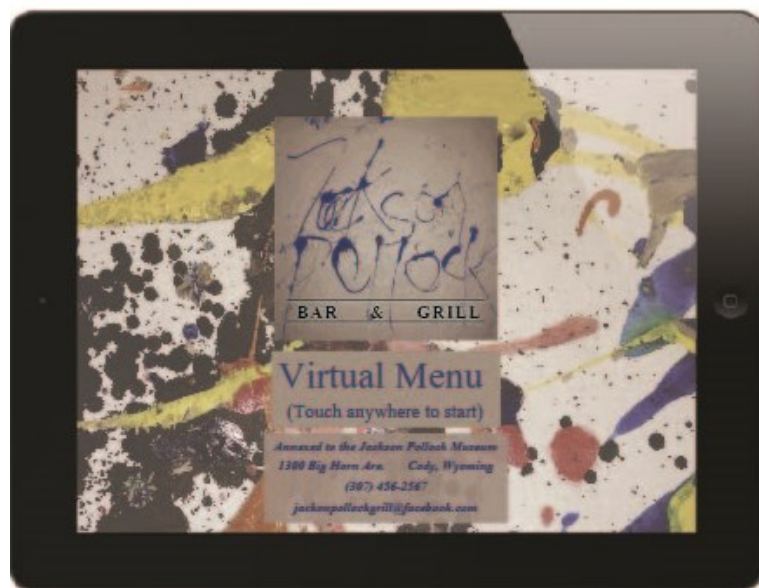


Figure 8: Jackson Pollock Virtual Menu.

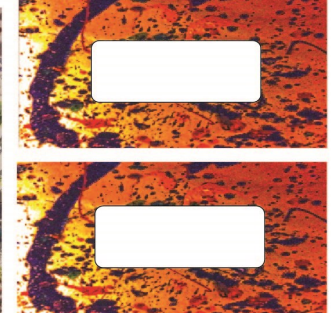
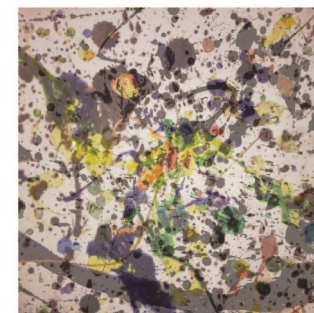
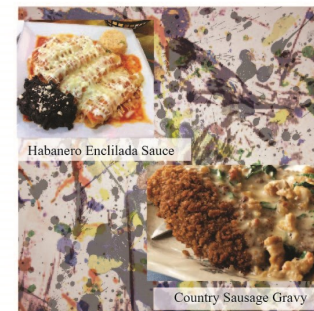
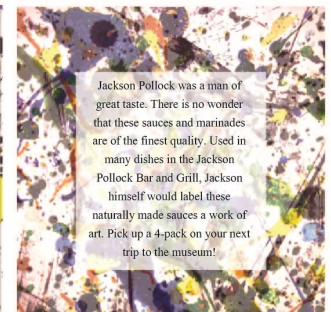
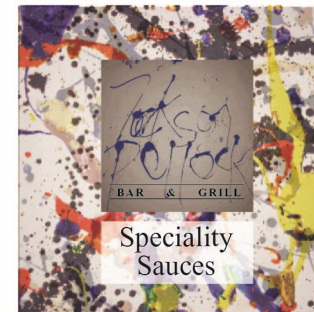
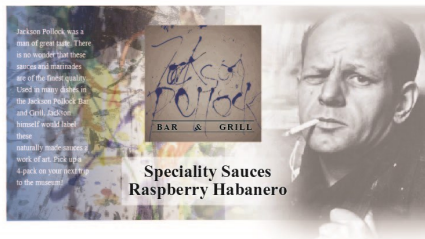
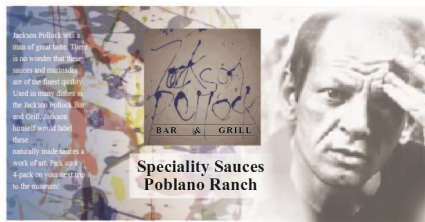
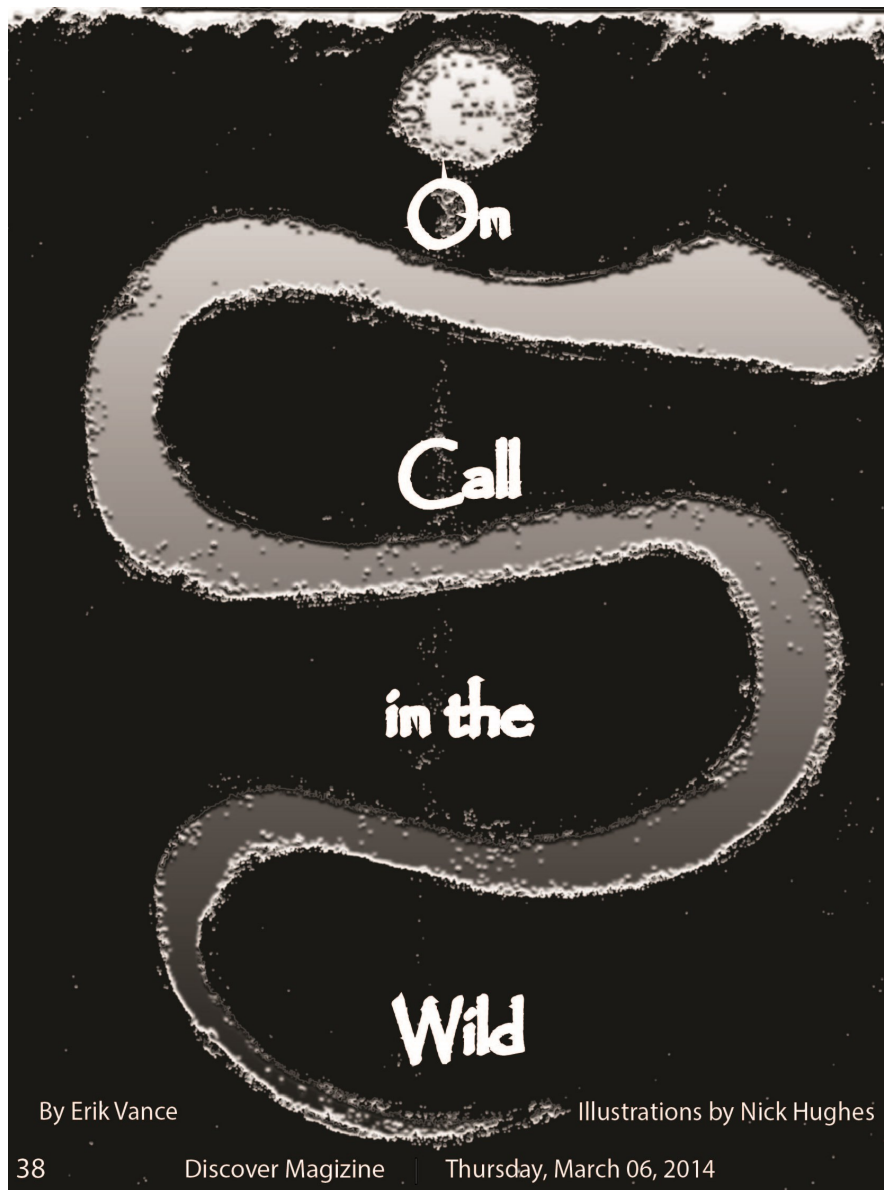


Figure 9: Jackson Pollock Flat Packaging Art.



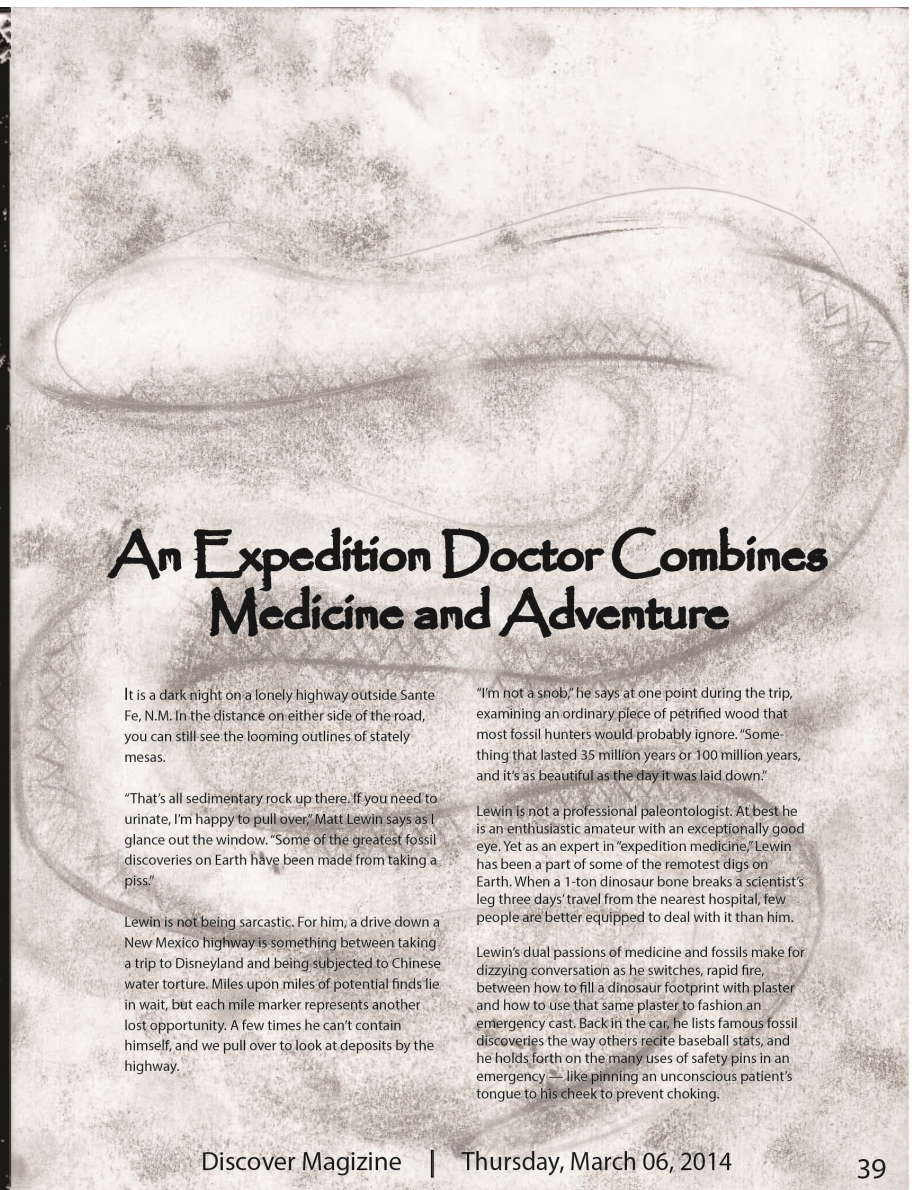
Figure 10: Jackson Pollock Packaging.



38

Discover Magazine

Thursday, March 06, 2014



## An Expedition Doctor Combines Medicine and Adventure

It is a dark night on a lonely highway outside Sante Fe, N.M. In the distance on either side of the road, you can still see the looming outlines of stately mesas.

"That's all sedimentary rock up there. If you need to urinate, I'm happy to pull over," Matt Lewin says as I glance out the window. "Some of the greatest fossil discoveries on Earth have been made from taking a piss."

Lewin is not being sarcastic. For him, a drive down a New Mexico highway is something between taking a trip to Disneyland and being subjected to Chinese water torture. Miles upon miles of potential finds lie in wait, but each mile marker represents another lost opportunity. A few times he can't contain himself, and we pull over to look at deposits by the highway.

"I'm not a snob," he says at one point during the trip, examining an ordinary piece of petrified wood that most fossil hunters would probably ignore. "Something that lasted 35 million years or 100 million years, and it's as beautiful as the day it was laid down."

Lewin is not a professional paleontologist. At best he is an enthusiastic amateur with an exceptionally good eye. Yet as an expert in "expedition medicine," Lewin has been a part of some of the remotest digs on Earth. When a 1-ton dinosaur bone breaks a scientist's leg three days' travel from the nearest hospital, few people are better equipped to deal with it than him.

Lewin's dual passions of medicine and fossils make for dizzying conversation as he switches, rapid fire, between how to fill a dinosaur footprint with plaster and how to use that same plaster to fashion an emergency cast. Back in the car, he lists famous fossil discoveries the way others recite baseball stats, and he holds forth on the many uses of safety pins in an emergency — like pinning an unconscious patient's tongue to his cheek to prevent choking.

Discover Magazine

Thursday, March 06, 2014

39

Fig 11: On Call in the Wild Magazine Spread.

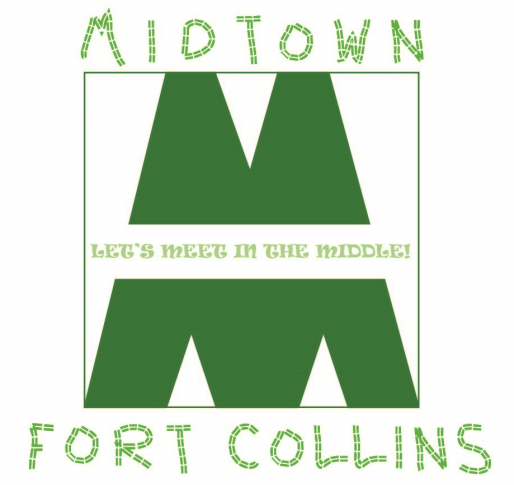
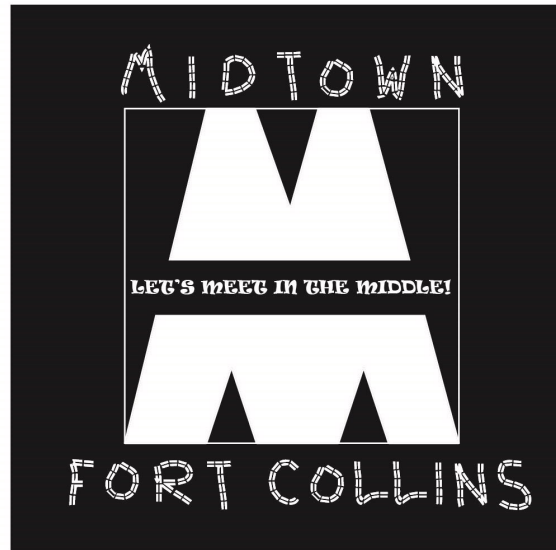
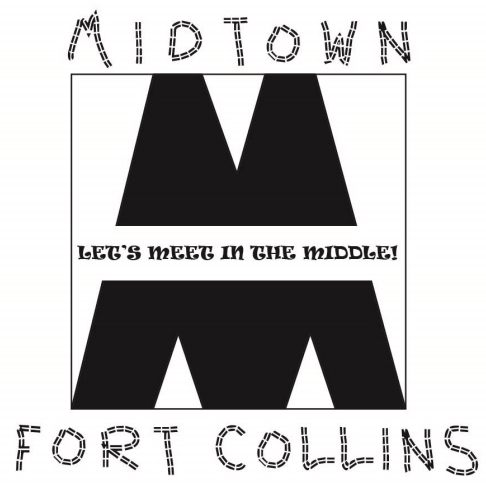


Fig 12: Midtown Business Branding Logos Original.



Figure 13: Midtown Business Branding Logos.