





## **Artist Statement**

### **Hannah Tracy**

Drawing is a science. It is a careful and spontaneous search through critical observation, process, and mark making. For the last couple years I have become involved with art concerning environmental awareness, education, and activism. Most of my work stems from personal research and exposure to global environmental issues while incorporating ideas of human interaction with the natural world. I do not, by any means, feel the need to create environmental propaganda; my pieces are meant to start discussion and to give value to both human and natural occurrences.

Over the last couple years I have become interested in how my explorations in contemporary work have affected the way in which I work with traditional drawing media. I have found that if you engage yourself fully into the process of mark making, no matter the media, there is opportunity beyond the final product. When I fully involve myself in one of my drawings, I find peace in the monotony of working with pencil. I obsess over every crevasse and line. Creating an alternate terrain on an empty surface gives me the ultimate sense of satisfaction. My specific and cathartic approach to drawing has become a meditative way of dealing with my own need for control. This recent realization has allowed me to intentionally talk about myself through my art.

I am currently using my work as a vehicle in order to project my concern for the natural world as well as my own human condition. I do believe that they go hand in hand and I am relying on the process to give me more answers about both subjects.

	<u>Title</u>	<u>Media</u>	<u>Original Format</u>
<b>Figure 1:</b>	<b>422</b>	Drawing	Pen on paper, installation
<b>Figure 2:</b>	<b>Fitz Roy</b>	Drawing	Graphite on paper, 36 in x 18 in
<b>Figure 3:</b>	<b>Fountain</b>	Drawing	Graphite on paper, 36 in x 18 in
<b>Figure 4:</b>	<b>Holes and Other Superficialities</b>	Drawing	Graphite on paper, 36 in x 18 in
<b>Figure 5:</b>	<b>Incantation</b>	Drawing	Pen and spit on paper, 70 in x 36 in
<b>Figure 6:</b>	<b>Incantation (detail)</b>	Drawing	Pen and spit on paper, 70 in x 36 in
<b>Figure 7:</b>	<b>Limne</b>	Drawing	Cut paper, 70 in x 36 in
<b>Figure 8:</b>	<b>Limne (detail)</b>	Drawing	Cut paper, 70 in x 36 in
<b>Figure 9:</b>	<b>Skyscape 2</b>	Drawing	Graphite on linen, (3) 9 ft x 3 ft
<b>Figure 10:</b>	<b>Skyscape 2 (detail)</b>	Drawing	Graphite on linen, (3) 9 ft x 3 ft
<b>Figure 11:</b>	<b>Skyscape 2 (detail)</b>	Drawing	Graphite on linen, (3) 9 ft x 3 ft
<b>Figure 12:</b>	<b>Static Piles</b>	Drawing	Graphite and gum wrapper on paper, 50 in x 24 in
<b>Figure 13:</b>	<b>Static Piles (detail)</b>	Drawing	Graphite and gum wrapper on paper, 50 in x 24 in
<b>Figure 14:</b>	<b>Untitled</b>	Drawing	Graphite on paper, 36 in x 50 in
<b>Figure 15:</b>	<b>Untitled (detail)</b>	Drawing	Graphite on paper, 36 in x 50 in
<b>Figure 16:</b>	<b>Untitled (detail)</b>	Drawing	Graphite on paper, 36 in x 50 in



Figure 1: 422



**Figure 2: Fitz Roy**

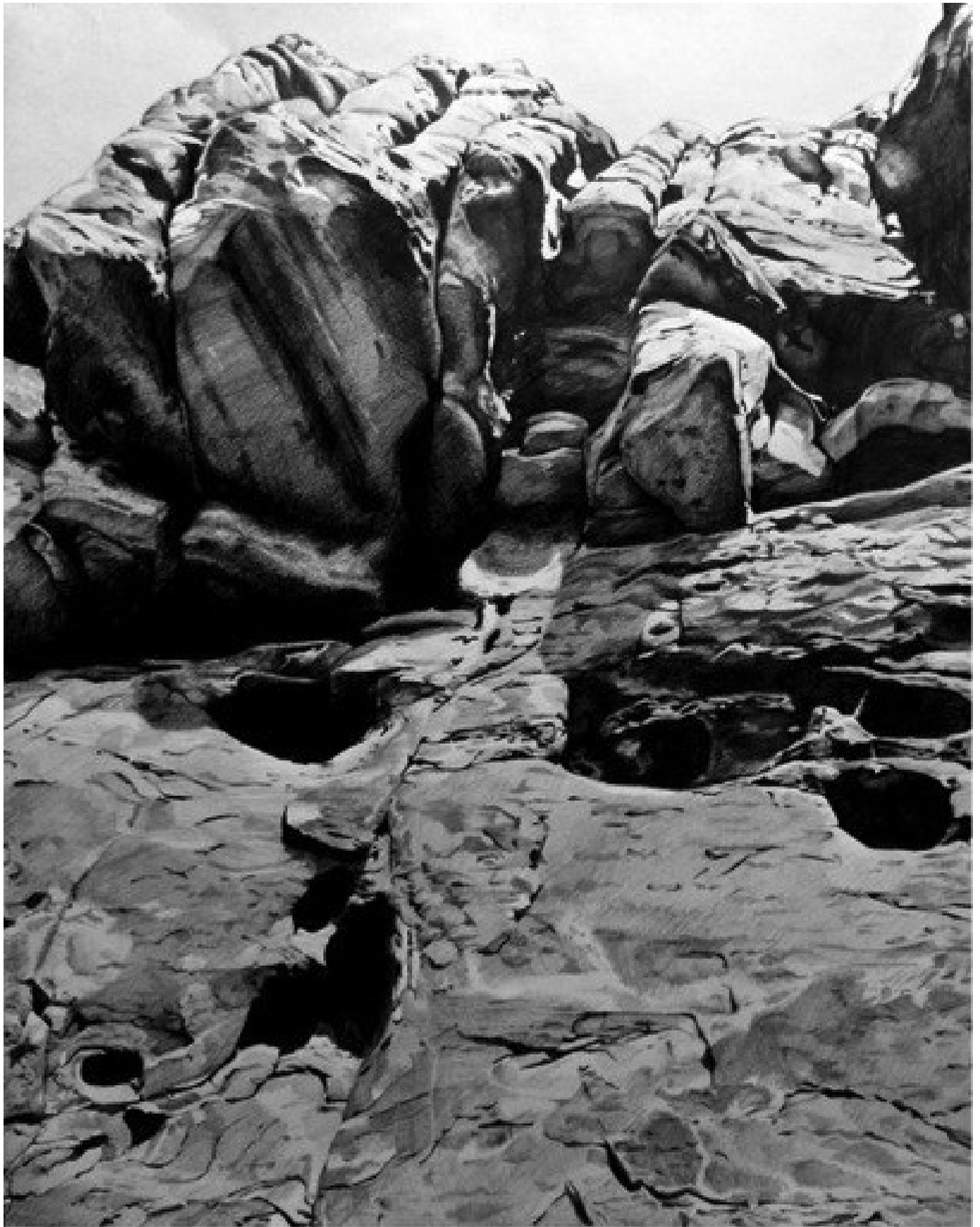


Figure 3: Fountain



**Figure 4: Holes and Other Superficialities**



**Figure 5: Incantation**



POSITS AND FUNDS ON BEVERAGE CONTAINERS MEASURE 37 1996 OREGON  
SOUTH DAKOTA COAL TRUST FUND EXPENDITURES MEASURE 1 1994 MAINE MUNICI  
AND HAZARDOUS MATERIALS TAX INITIATIVE QUESTION 1 1992 MASSACHUSETTS R  
AND CLOSING QUESTION 6 1997 ARIZONA ESTABLISHING THE REDUCTION  
135 REGULATION OF PESTICIDES 1997 CALIFORNIA PROPOSITION 13 NO CARCIN  
N NO 4 1990 MINNESOTA USE OF LITTER FOR ENVIRONMENTAL REST FUND  
CENTURY ENVIRONMENTAL QUALITY BOND ACT PROPOSITION 13 1997  
CLEANUP CLOSURES QUESTION 10 1987 KANSAS WASTE DISPOSAL AND  
GROUND OIL TANKS QUESTION 3 1983 MINNESOTA ENVIRONMENTAL AND NATUR  
ION MEASURE 1 1988 SOUTH DAKOTA SURFACE MINING RECLAMATION INITIATIVE  
INSTRUCTION QUESTION 3 1987 MAINE SOLID WASTE LANDFILL CLEANUP AND CLOS  
THE IDENTIFICATION OF HAZARDOUS WASTE SITES QUESTION 4 1980 MASSACHUSETTS  
HINGTON NUCLEAR WASTE DISPOSAL REFERENDUM 40 1986 WASHINGTON SAL  
ROVEMENT FACILITIES AND OIL CONTAMINATED GROUND WATER RESTORATION  
PROPOSAL INITIATIVE 1984 CALIFORNIA BEVERAGE CONTAINERS REFUND INITIATIVE  
MAINE MUNICIPALITY RESOURCE CONSERVATION AND RECOVERY SYSTEMS  
14 1980 MONTANA LITTER CONTROL AND RECYCLING 1-87 1980 WASHINGTON  
ER QUESTION 1979 OHIO BOTTLE DEPOSITS INITIATIVE 1 1977 WASHINGTON  
REVENUE AMENDMENT 21 1978 MAINE ENERGY CONSERVATION IMPROVEMENT  
BOTTLE REFUND 1976 MASSACHUSETTS BEVERAGE CONTAINERS RECYCLING  
ANDUM 33 1977 CALIFORNIA PROPOSITION 3 BONDS FOR POLLUTION CONTROL F  
IDS AND PART BONDS REFERENDUM 1 1972 MASSACHUSETTS RIGHT TO CLEAN  
INTELL ACT INITIATIVES 40 AND 40B 1972 WASHINGTON SHELLE USE AND DE  
FLORIDA POLLUTION CONTROL BONDS AMENDMENT 4 1970 FLORIDA SALE OF  
PEAL REFERENDUM QUESTION NUMBER 4 1970 BONDS FOR POLLUTION CON  
CONTAINERS INITIATIVE 1956 1970 MAINE POLLUTION ABATEMENT FACILITIES RE  
OREGON BONDS FOR PUBLIC UTILITIES MEASURE 6 1968 TEXAS DEEMPTIE  
ERENDUM QUESTION 2 1966 MAINE POLLUTION ABATEMENT FACILITIES REFER  
AND DEPARTMENT MEASURE 3 1960 FLORIDA GAME AND FRESHWATER FISH COMM  
AMENDMENT 3 1992 FLORIDA SALT WATER FISH AND PRODUCTS CONSERVATION  
OM WATER AND SOIL CONSERVATION STATE QUESTION 30 1936 OKLAHOMA SOIL  
PRESERVATION OF THE MCKENZIE RIVER MEASURE 8 1928 OREGON PRE  
CLAMATION RIVER FISH AND GAME DISTRICT PROPOSITION 11 1924 MINNESOTA EXPENDITUR  
NA STATE CONSERVATION COMMISSION PROPOSITION 6 1920 TEXAS CONSERVATION DIS

Figure 6: Incantation (detail)



Figure 7: Limne





Figure 8: Limne (detail)



**Figure 9: Skyscapes 2**





**Figure 10: Skyscapes 2 (detail)**



**Figure 11: Skyscapes 2 (detail)**

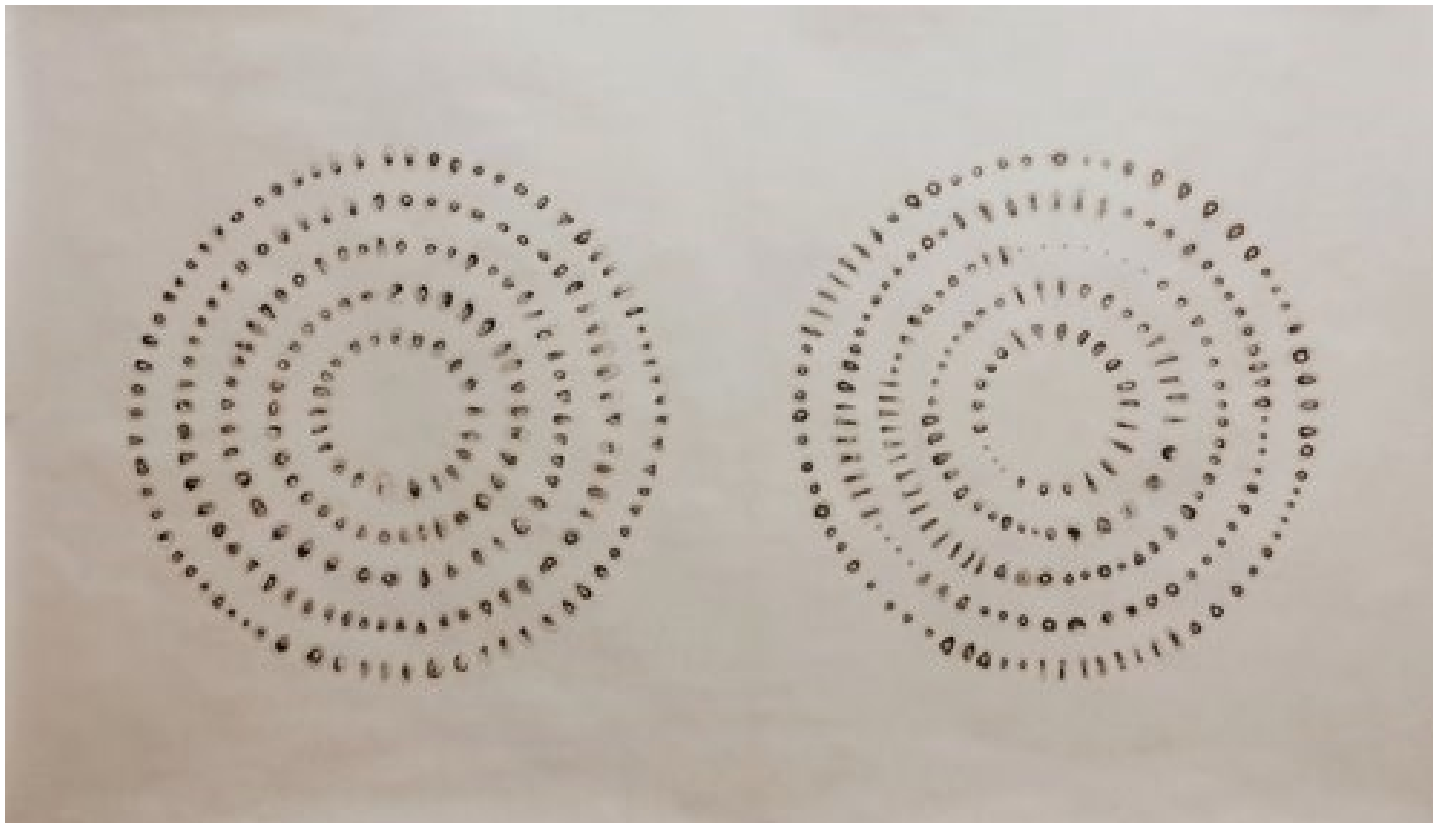




**Figure 12: Static Piles**



Figure 13: Static Piles (detail)



**Figure 14: Untitled**





Figure 15: Untitled (detail)



Figure 16: Untitled (detail)