



Artist Statement

Leena Hibbert

As an artist I delight in the exploration of form in all its incarnations. I appreciate the versatility of metal as it takes its shape, and the possibilities are only limited by my skills and imagination. Much of my work to date has been sculptural jewelry that functions as wearable art. However, most recently my work has turned toward experimentation with form. I am drawn to nature which inspires this organic work. Through this exploration, I find the satisfaction of melding soft form with the perceived rigidity of metal.

I feel a deep connection with the metalsmiths of the past. It is amazing to me that the techniques employed by the earliest artisans have lasted through the millennia with minimal change. This knowledge ties me to history in a way that I really appreciate. My fascination allows me to draw inspiration from historical artifacts from both recent and ancient history. This appreciation for history also inspires me to explore my own heritage. My newest work is informed by my Irish – Celtic lineage because I know so little about that side of my family. My work is my way of connecting with the ancestors that I cannot possibly know through the largely unchanged processes of metalsmithing.

	<u>Title</u>	<u>Original Format</u>	<u>Media</u>
Figure 1:	nonfunctional ring - full	metal bracelet	copper
Figure 2:	nonfunctional ring - hand	metal bracelet	copper
Figure 3:	nonfunctional ring - rose detail	metal bracelet	copper
Figure 4:	celtic-full	metal choker necklace	copper, silver, amazonite, blue topaz
Figure 5:	celtic-detail	metal choker necklace	copper, silver, amazonite, blue topaz
Figure 6:	entrapment-side1	metal necklace	sterling silver
Figure 7:	entrapment-side2	metal necklace	sterling silver
Figure 8:	HFR-full	metal ring	sterling silver, copper, peridot
Figure 9:	HFR-filigree	metal ring	sterling silver, copper, peridot
Figure 10:	HFR-stone setting	metal ring	sterling silver, copper, peridot
Figure 11:	new growth - full	metal sculpture	Copper, brass
Figure 12:	new growth - detail	metal sculpture	copper, brass
Figure 13:	new growth - leaf detail	metal sculpture	copper, brass
Figure 14:	yule log - full	metal candle holder	copper, wax, leather wrapping
Figure 15:	yule log - candle detail	metal candle holder	copper, wax, leather wrapping
Figure 16:	yule log - holly detail	metal candle holder	copper, wax, leather wrapping
Figure 17:	Untitled		
Figure 18:	Untitled		
Figure 19:	Untitled		
Figure 20:	Untitled		



Figure 1: nonfunctional ring - full.



Figure 2: nonfunctional ring - hand.



Figure 3: nonfunctional ring - rose detail.



Figure 4: celtic-full.



Figure 5: celtic-detail.



Figure 6: entrapment-side1.



Figure 7: entrapment-side2.



Figure 8: HFR-full.



Figure 9: HFR-filigree.



Figure 10: HFR-stone setting.



Figure 11: new growth - full.



Figure 12: new growth - detail.



Figure 13: new growth - leaf detail.



Figure 14: yule log - full.

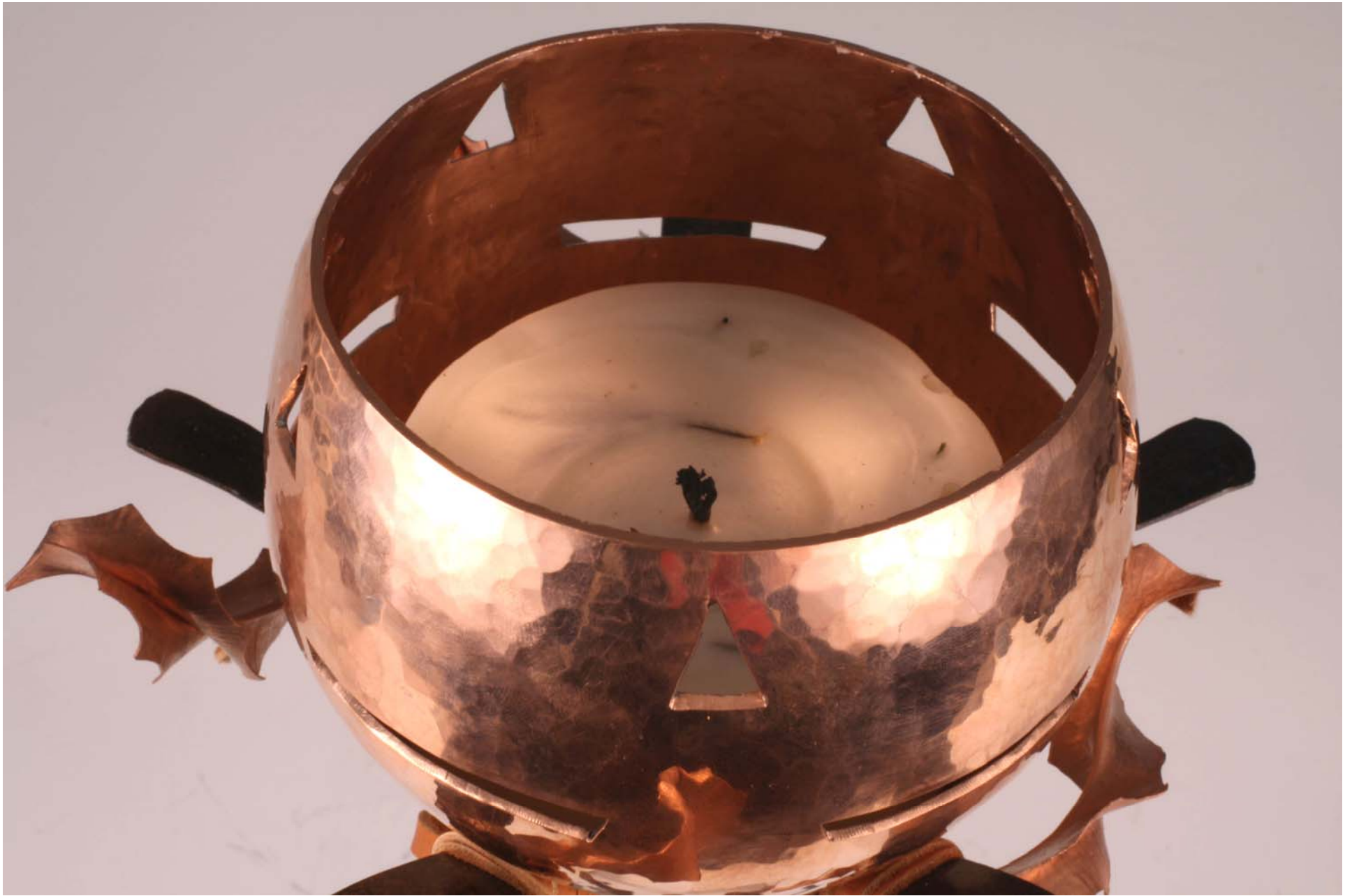


Figure 15: yule log - candle detail.



Figure 16: yule log - holly detail.



Figure 17: untitled.

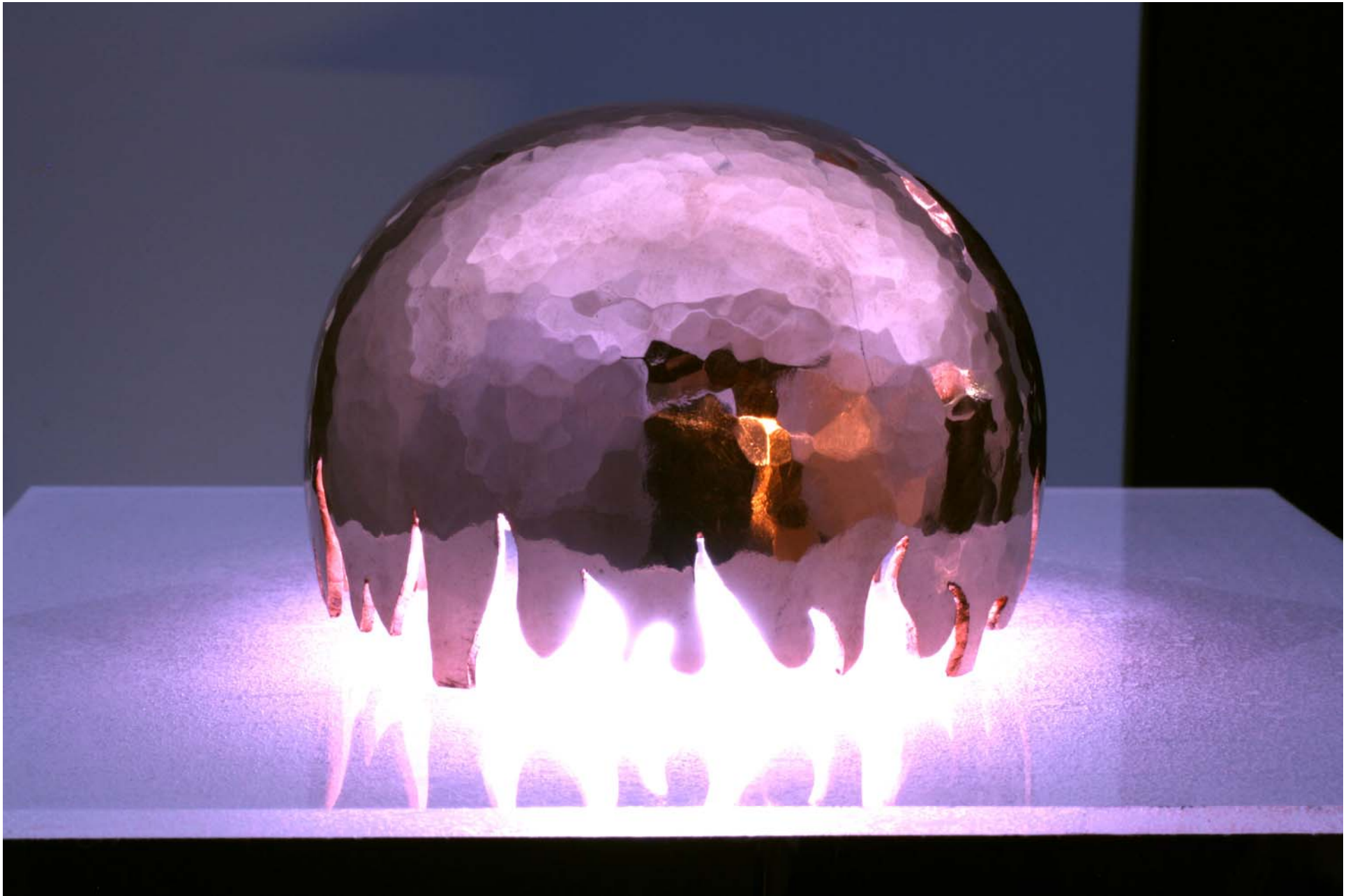


Figure 18: untitled.

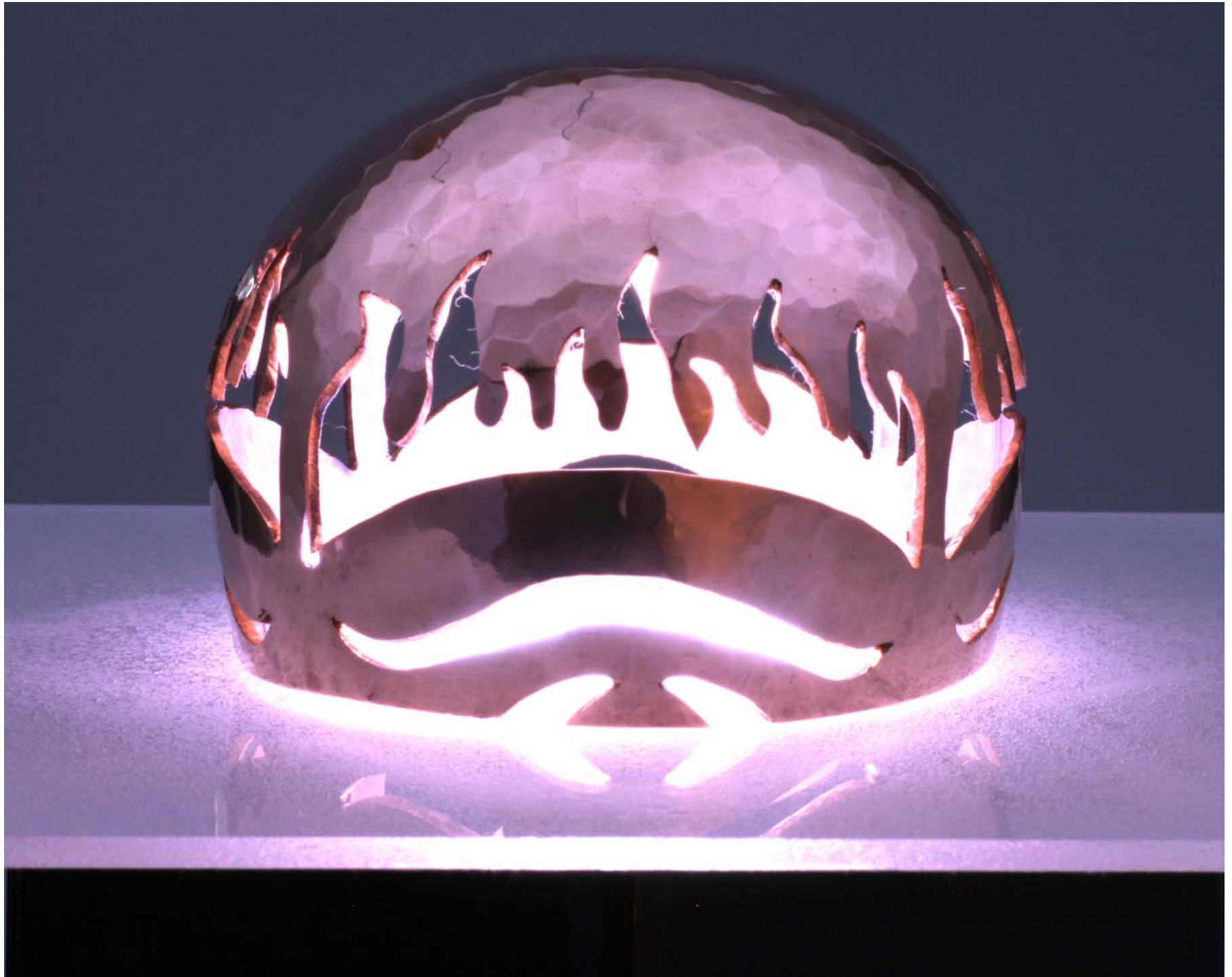


Figure 19: untitled.

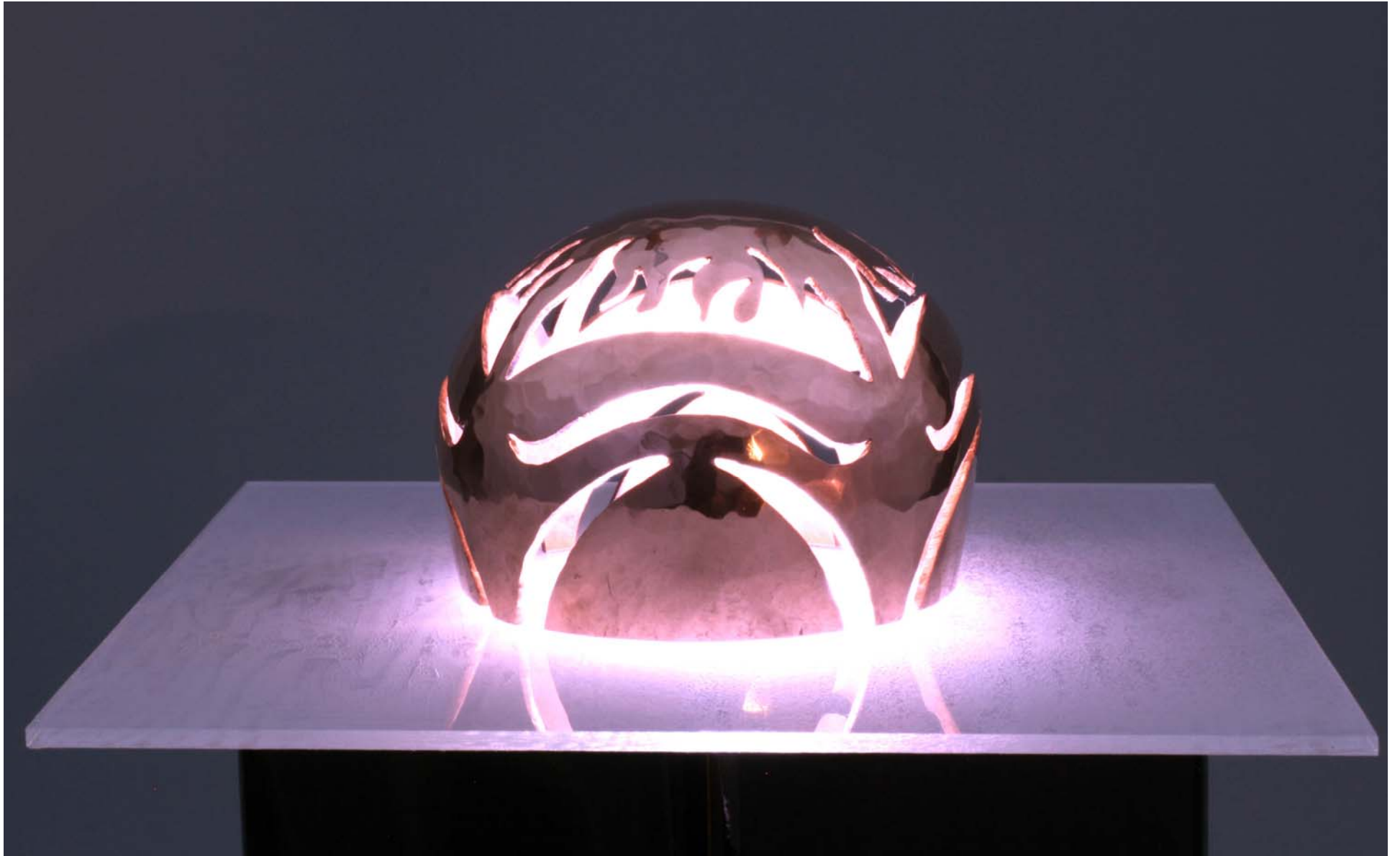


Figure 20: untitled.