

Welcome to the beginning
of a real existence.

Join us Sunday, the 12th of December for a
special conference with Gideon Cole,
CEO of your IRIS Corp., and the man behind
the Seattle Sector. Innovating the future. Now.



IRIS
corp
Innovating You.

	<u>Title</u>
Figure 1:	Pop-Up Card
Figure 2:	Iris Corp. - Ad 1
Figure 3:	Iris Corp. - Ad 2
Figure 4:	Iris Corp. - Ad 3
Figure 5:	Iris Corp. - Ad 4
Figure 6:	Iris Corp. - Logo 1
Figure 7:	Iris Corp. - Logo 2
Figure 8:	Iris Corp. - Logo 3
Figure 9:	Iris Corp. - Poster 1
Figure 10:	Iris Corp. - Poster 2
Figure 11:	Iris Corp. - Poster 3
Figure 12:	Iris Corp. - Card 1
Figure 13:	Iris Corp. - Card 2
Figure 14:	Iris Corp. - Letterhead
Figure 15:	Iris Corp. - Envelope
Figure 16:	Iris Corp. - Website 1
Figure 17:	Iris Corp. - Website 2
Figure 18:	Iris Corp. - Website 3
Figure 19:	Iris Corp. - Website 4
Figure 20:	Iris Corp. - Website 5
Figure 21:	Iris Corp. - Website 6
Figure 22:	Chill House Asian Cuisine - Meishi
Figure 23:	Chill House Asian Cuisine - Fengsheng
Figure 24:	Chill House Asian Cuisine - Buke kangju
Figure 25:	Slaughterhouse Five - book cover
Figure 26:	Slaughterhouse Five - inside copy
Figure 27:	Ascension
Figure 28:	Threat Level
Figure 29:	Smoke - Support Population Control
Figure 30:	Derby Battle
Figure 31:	CSU Research Colloquium Poster
Figure 32:	March Calendar - M hieroglyph



Figure 1: Pop-Up Card

The advertisement features a man in a dark suit and tie, looking down with a serious expression. He is positioned on the right side of the frame. The background is a vibrant orange-red gradient with large, faint, overlapping circular patterns. In the bottom left corner, a black and white silhouette of the Seattle skyline is visible, including the prominent Space Needle. The overall aesthetic is modern and professional.

Welcome to the beginning
of a real existence.

Join us Sunday, the 12th of December for a
special conference with Gideon Cole,
CEO of your IRIS Corp., and the man behind
the Seattle Sector. Innovating the future. Now.

IRIS
corp
Innovating You.

Figure 2: Iris Corp. - Ad 1



The Next Generation is Now.

The latest IRIS Corp. implants are already upon us. Stop by your district's registration center to upgrade your own today.

IRIS
corp



Innovating You.

Figure 3: Iris Corp. - Ad 2

Log In.

An accurate log of your child's life and behavior not only influences their future, but also the ongoing success of the Seattle Sector.

Support your city by supporting your children.

IRIS
corp
Innovating You.

Figure 4: Iris Corp. - Ad 3

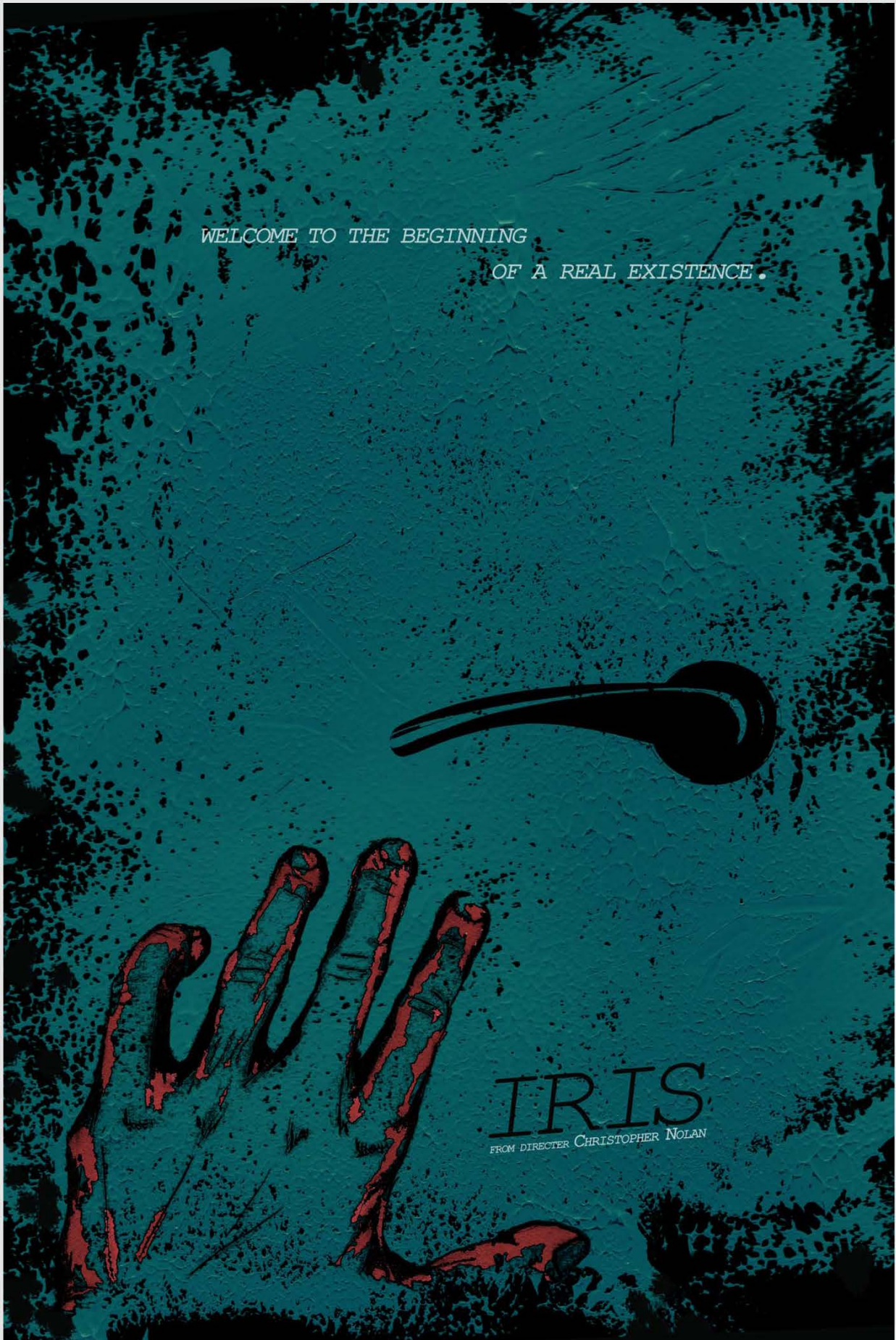


Figure 5: Iris Corp. - Ad 4



Figure 6: Iris Corp. - Logo 1



Figure 7: Iris Corp. - Logo 2



Figure 8: Iris Corp. - Logo 3

Adult Registration
creates a new you.

Unshackle your mind
with Iris Corp.
implanting



Innovating You.

Figure 9: Iris Corp. - Poster 1

Innovation begins with a
safe and secure sector.
Innovating security.
Innovating **You.**

Figure 10: Iris Corp. - Poster 2

Innovating
the Seattle Sector.
Innovating technology.
Innovating You.

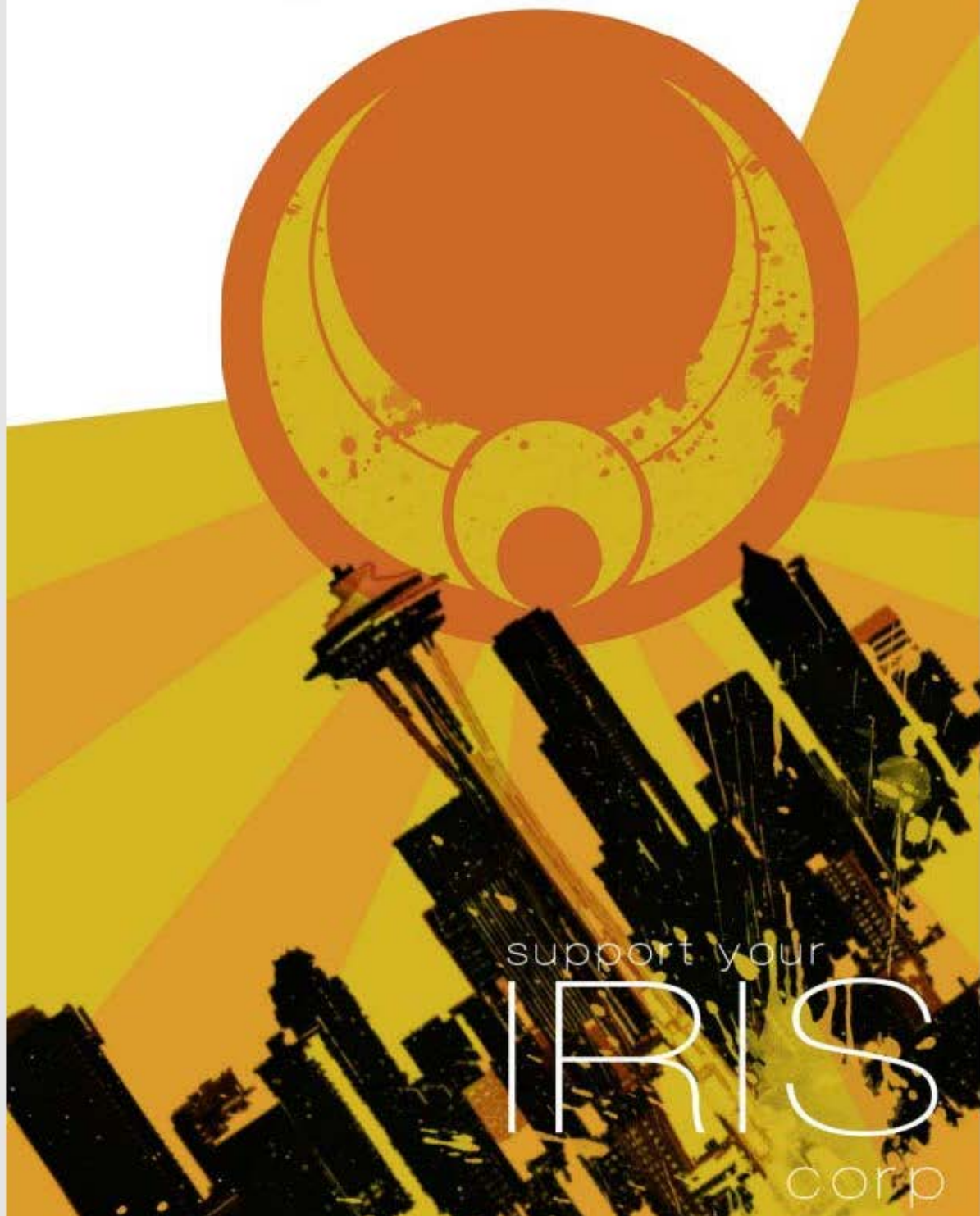


Figure 11: Iris Corp. - Poster 3

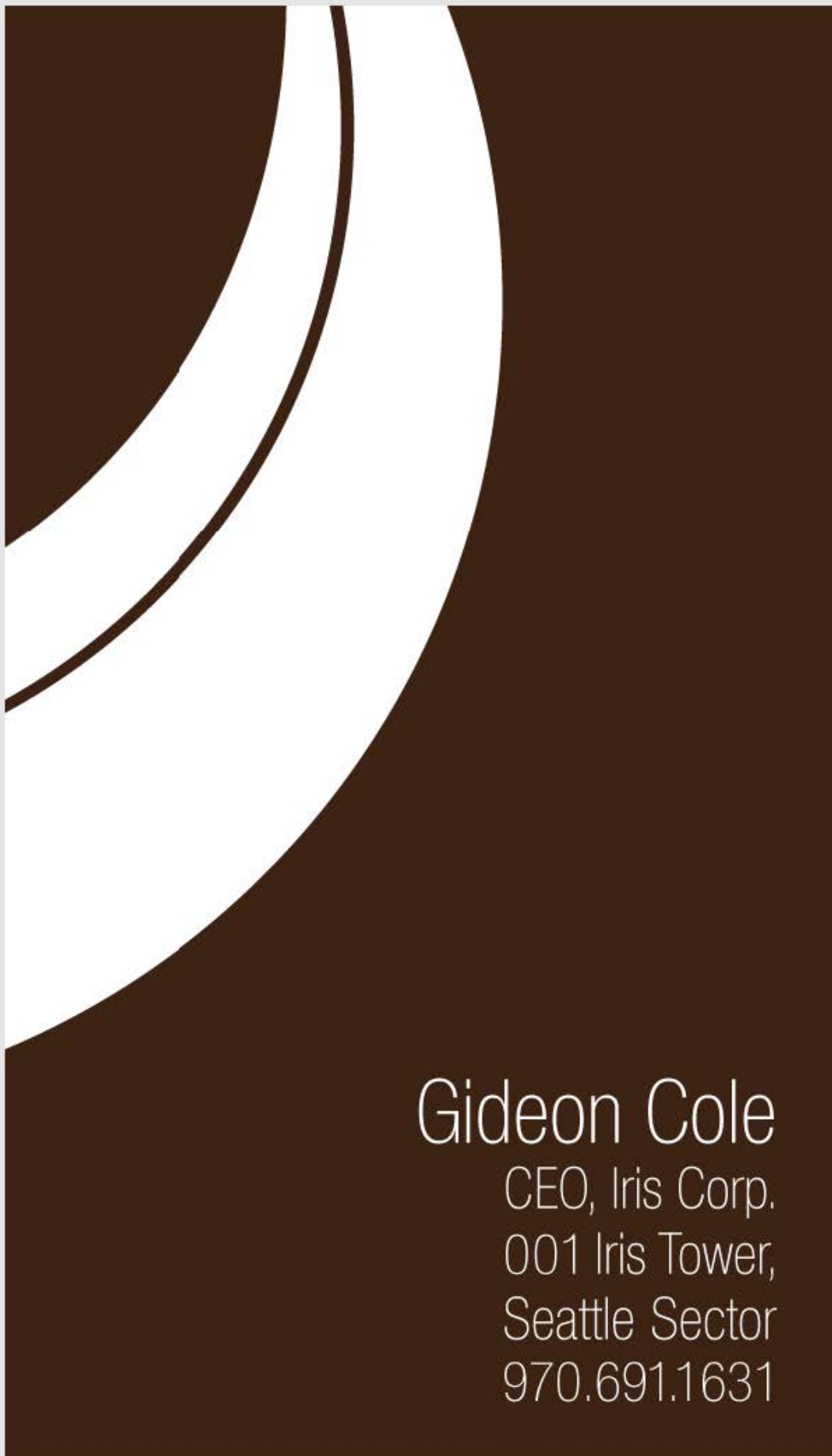


Figure 12: Iris Corp. - Card 1



Figure 13: Iris Corp. - Card 2



001 Iris Tower,
Seattle Sector

Figure 14: Iris Corp. - Letterhead



Figure 15: Iris Corp. - Envelope



Innovating Entertainment.

Innovating Living Conditions.

Innovating Technology.

Welcome to the beginning

Innovating Education.

of a real existence.

Innovating Trade.

Innovating You.

Innovating Security.

Innovating Employment.

[Skip Intro](#)

Figure 16: Iris Corp. - Website 1



[Home](#)

[About](#)

[Registration](#)

[Implanting](#)

[Support](#)

[My Account](#)

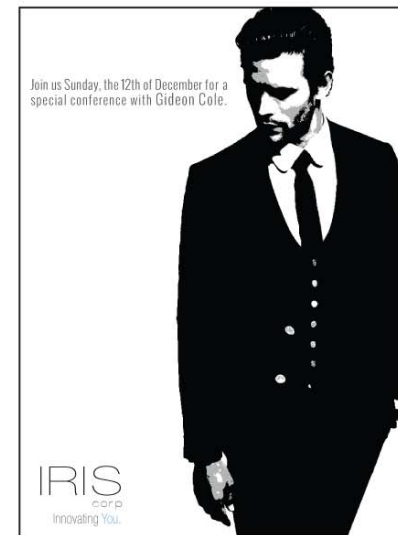
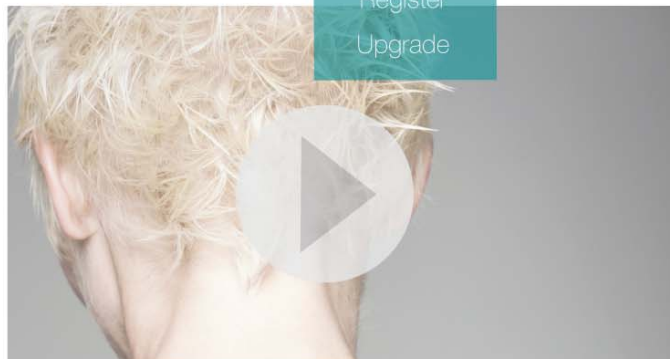


Figure 17: Iris Corp. - Website 2



[Home](#) [About](#) [Registration](#) [Implanting](#) [Support](#) [My Account](#)

Process
Implant Series
Register
Upgrade



A History of Implanting

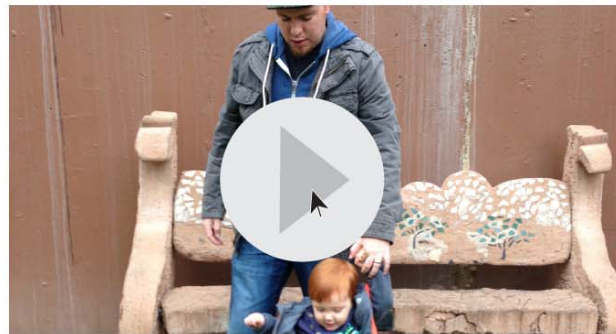
Our implants have improved countless lives and productivity across all Sectors. In addition to maintaining our own Seattle Sector with implants to every registered citizen, any registered citizen of any Sector may obtain implants of their own.

Figure 18: Iris Corp. - Website 3



[Home](#) [About](#) [Registration](#) [Implanting](#) [Support](#) [My Account](#)

What Is Adult Registration?



Every citizen of the Seattle Sector's parents keep logs of their children's behavior for their entire adolescent life. When the child reaches upper course work in their schooling, they begin to focus on an area of their liking. Once they are 18, they go through a process called Adult Registration, where they are given intense mental exams, tests, bloodwork ect. All the information compiled for the last 18 years in conjunction with the registration information is put into effect and that person is **implanted** and placed where they will do the most good within our sector.

Figure 19: Iris Corp. - Website 4



[Home](#) [About](#) [Registration](#) [Implanting](#) [Support](#) [My Account](#)

Innovating You.



Welcome to the beginning of a real existence. These words were uttered by during the founding of this company by IRIS CEO Gideon Cole, and have become the moto of our great corporation. The Iris Corporation is the leading innovator and provider of technology and electronic needs in the 16 Sectors, as well as assuming the primary role of governing and procuring the safety of the Seattle Sector.

Figure 20: Iris Corp. - Website 5



[Home](#) [About](#) [Registration](#) [Implanting](#) [Support](#) [My Account](#)



Name: Bailey Giles

ID Number: 1047

District: South Laughlin, Seattle Sector

Registration Status: Registered

Implants: Labor Series 3.2

Position Granted: Field Worker

Profile

Upbringing

SS Progress

Awards

Age 18

Parents: Lynnal and Stacey Giles

School: Laughlin High School

Graduating Year: 2076

Marital Status: Single

Figure 21: Iris Corp. - Website 6

Meishí

*[Translation]
Delicious food.*



Figure 22: Chill House Asian Cuisine - Meishi

Fēngshèng

[Translation]

Sumptuous.



Figure 23: Chill House Asian Cuisine - Fengsheng



Figure 24: Chill House Asian Cuisine - Buke kangju

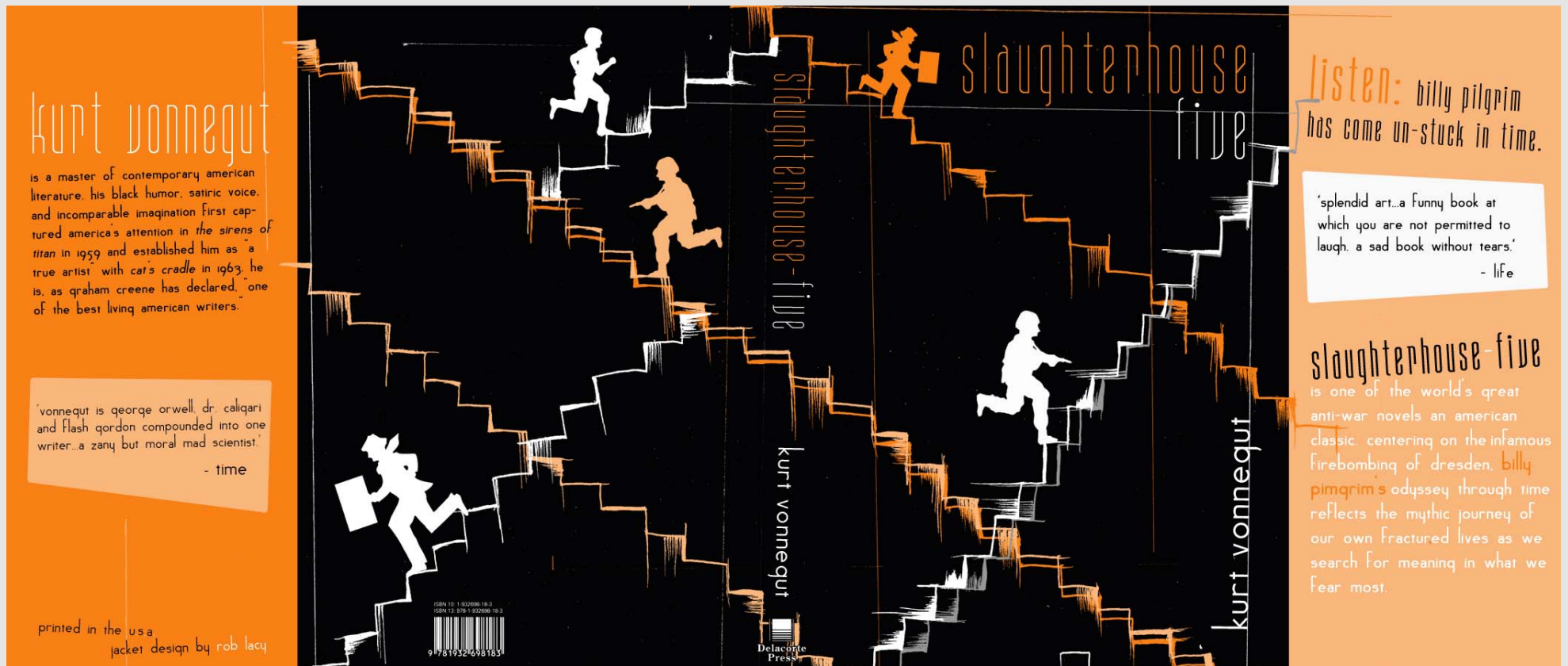


Figure 25: Slaughterhouse Five - book cover



billy pilgrim says that the universe 'does not look like a lot of bright little dots to the creatures from Tralfamadore. The creatures can see where each star has been and where it is going, so that the heavens are filled with rarefied, luminous spaghetti. And Tralfamadorians don't see human beings as two-legged creatures either. They see them as great millepedes - "with babies' legs at one end and old people's legs at the other," says Billy Pilgrim.

. . .

Billy asked for something to read on 'the trip to Tralfamadore. His captors had five million Earthling books on microfilm, but no way to project them in Billy's cabin. They had only one actual book in English which would be placed in a Tralfamadorian museum. It was Valley of the Dolls, by Jacqueline Susann.

112

slaughterhouse-five

Billy read it, thought it was pretty good in spots. The people in it certainly had their ups and downs, ups and downs. But Billy didn't want to read about the same ups and downs over and over again. He asked if there wasn't, please, some other reading matter around.

"Only Tralfamadorian novels, which I'm afraid you couldn't begin to understand," said the speaker on the wall.

"Let me look at one anyway."

So they sent him in several. They were little things. A dozen of them might have had the bulk of Valley of the Dolls-with all its ups and downs, ups and downs.

. . .

Billy couldn't read Tralfamadorian, of course, but he could at least see how the books were laid out - in brief clumps of symbols separated by stars. Billy commented that the clumps might be telegrams.

"Exactly," said the voice.

"There are telegrams?"

"There are no telegrams on Tralfamadore. But you're right: each clump of symbols is a brief, urgent message - describing the situation, a scene. We Tralfamadorians read them all at once, not one after the other."

113

Figure 26: Slaughterhouse Five - inside copy

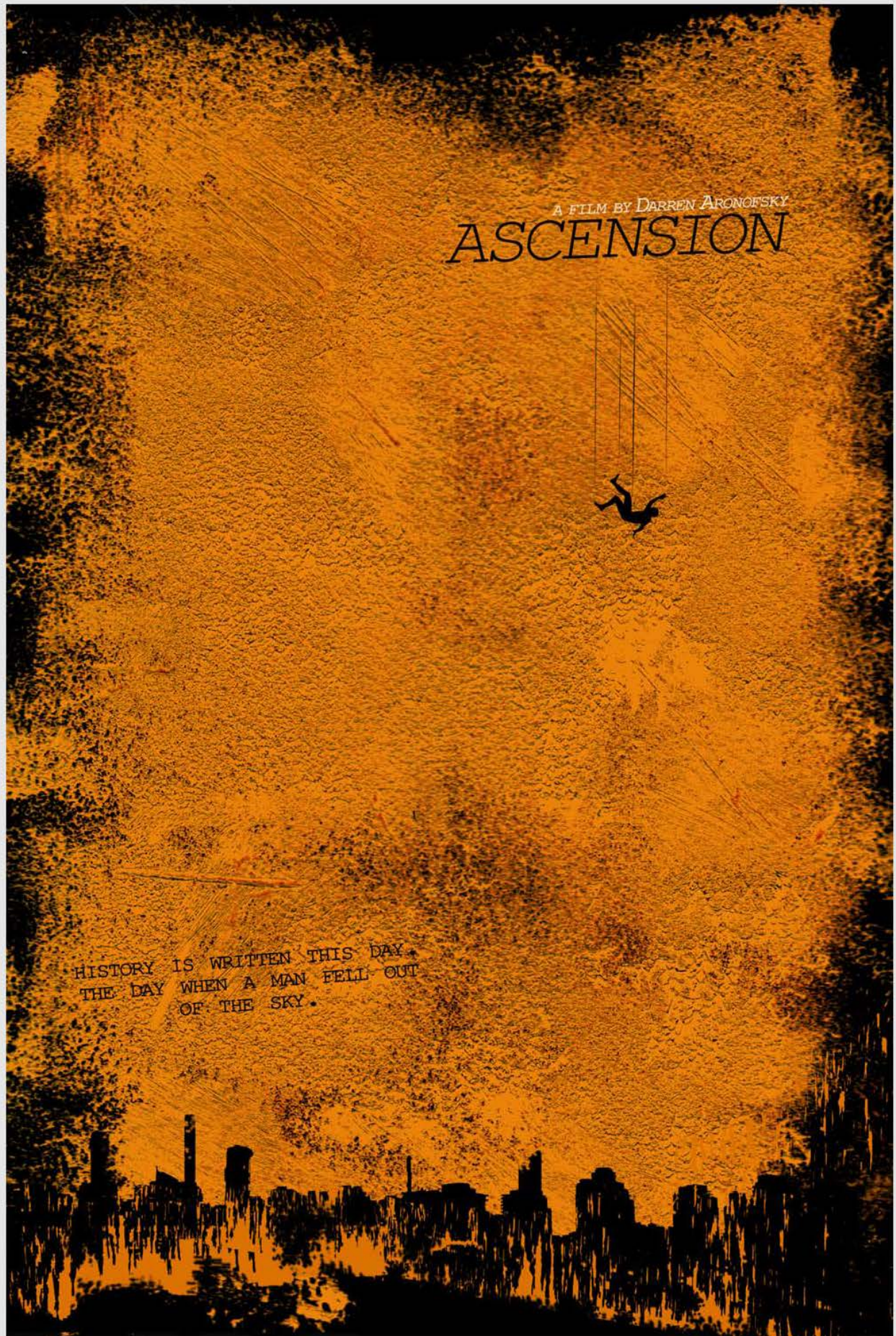


Figure 27: Ascension

From the Creators of
The Matrix and *V For Vendetta*

THREAT LEVEL

*Freedom or peace?
Make your choice.*

Figure 28: Threat Level

SUPPORT POPULATION CONTROL



Figure 29: Smoke - Support Population Control

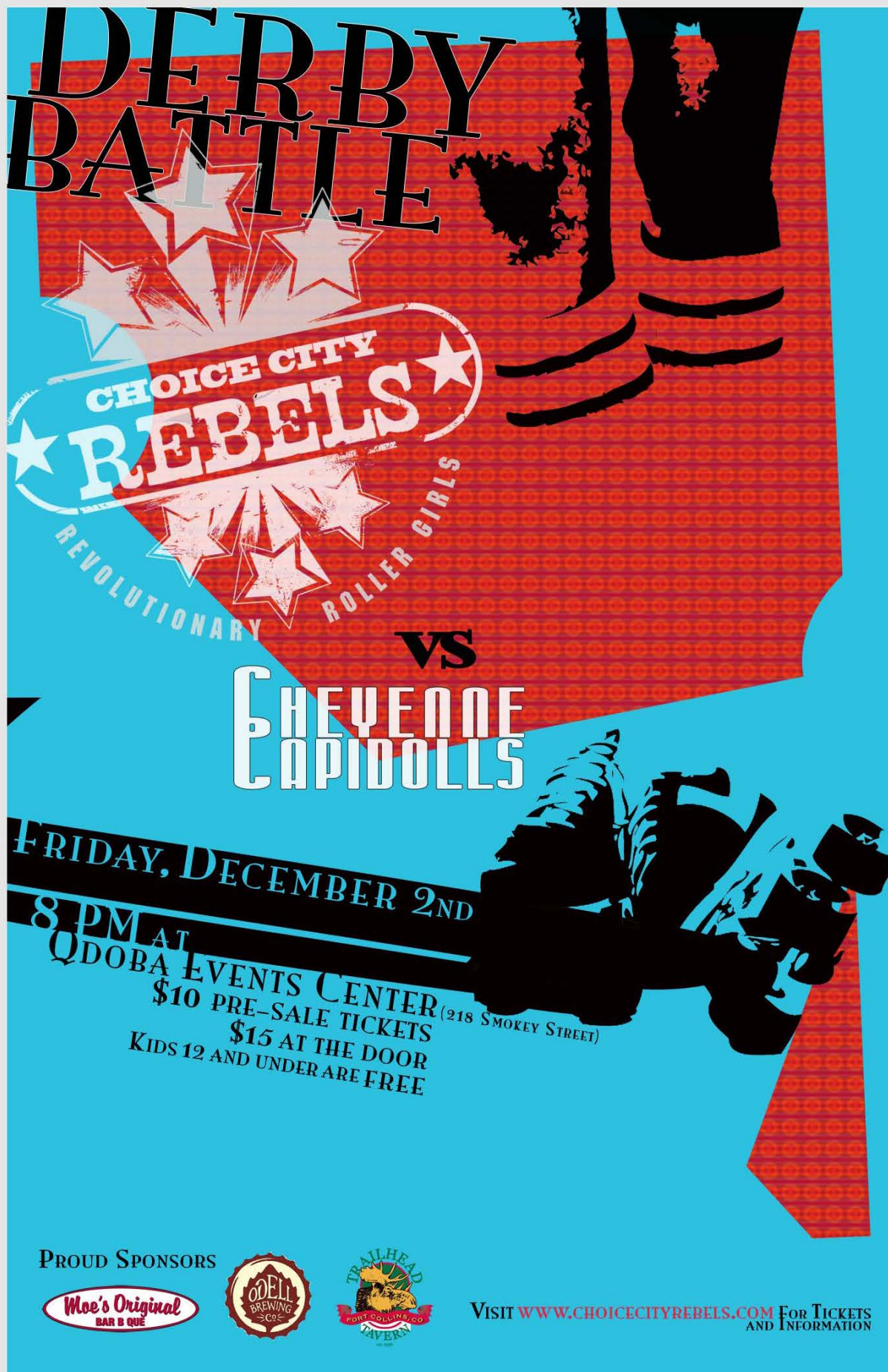


Figure 30: Derby Battle



Figure 31: CSU Research Colloquium Poster



Figure 32: March Calendar — M hieroglyph