



Hannah Chatham

Fall 2021

Capstone - Metalsmithing

Department of Art and Art History

**Artist Statement:**

I cast and manipulate parts of my body to create wearable conversation pieces.

Curious forms evolve from transformative processes, such as combined wax-casting and digital modeling.

Focus on orifices symbolize the importance of listening to your guts, or inner voice.

These devices playfully explore the interior and exterior, indulging sensuality and humor.

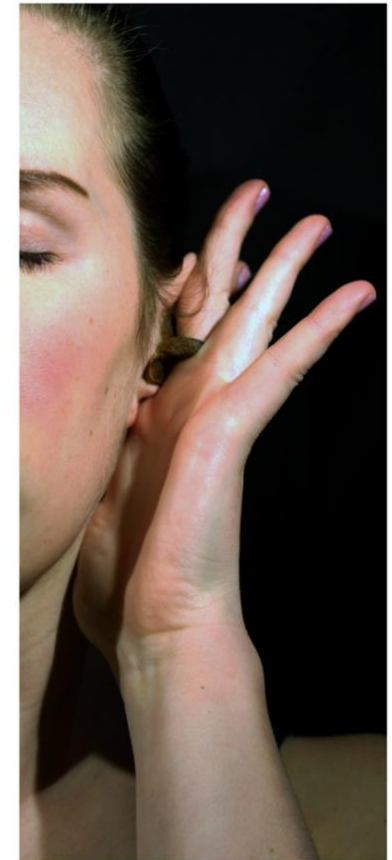
Title	Original Format
Figure 1: I can't hear you, I have flowers in my ears	Copper, Prismacolor, wool, thread
Figure 2: Inner Ear Rings	Cast bronze
Figure 3: Inner Ear Rings (worn)	Cast bronze
Figure 4: Ouroboros	Copper, wool
Figure 5: Ouroboros (worn)	Copper, wool
Figure 6: Ears all the Way Down	Cast sterling silver
Figure 7: Ears all the Way Down (with infinity pedestal)	Sterling silver, crafted pedestal
Figure 8: Buttons	Cast bronze
Figure 9: Buttons (base)	Copper, steel, acrylic, flocking
Figure 10: Promise Ring	Sterling silver, electroformed resin, PLA, wool, flocking



**Figure 1: I can't hear you, I have flowers in my ears**



**Figure 2: Inner Ear Rings**



**Figure 3: Inner Ear Rings (worn)**





**Figure 4: Ouroboros**



Figure 5: Ouroboros (worn)





**Figure 6: Ears all the Way Down**



**Figure 7: Ears all the Way Down (with infinity pedestal)**



**Figure 8: Buttons**



**Figure 9: Buttons (base)**





**Figure 10: Promise Ring**