

# Manyara Ranch

A Potential Model for Wildlife Management in Tanzania





# Tanzania Protected Areas

- National Parks
- Game Reserves
- Forest Reserves
- Conservation Areas
- Game Controlled Areas
- Wildlife Management Areas

28%





# Wildlife Ranches in Tanzania

- **Manyara Ranch**

- 45,000 acres

- **Ndarakwai Ranch**

- 11,000 acres
- Situated in Foot hills of Kilimanjaro
- Has a Photographic Lodge

- **TPC Ranch**

- 5,000 acres
- Within a Sugar Cane Plantation



‘In recognition of the importance of conservation of biological diversity to the livelihood of mankind, the state will retain the overall ownership of wildlife.....’

Wildlife Policy of Tanzania, 1998



# Wildlife Division Act 2013

4(i) create an enabling environment for the private sector to invest in different forms of wildlife utilization and conservation and to create an opportunity for the citizens of Tanzania to become involved in the wildlife industry;

Without prejudice to the provisions of this section, **no person other than a citizen of the United Republic** shall engage in wildlife ranching, farming, breeding, zoos, orphanage and game sanctuaries; in the case of a company, the **majority shares shall be owned by the citizens** of the United Republic.



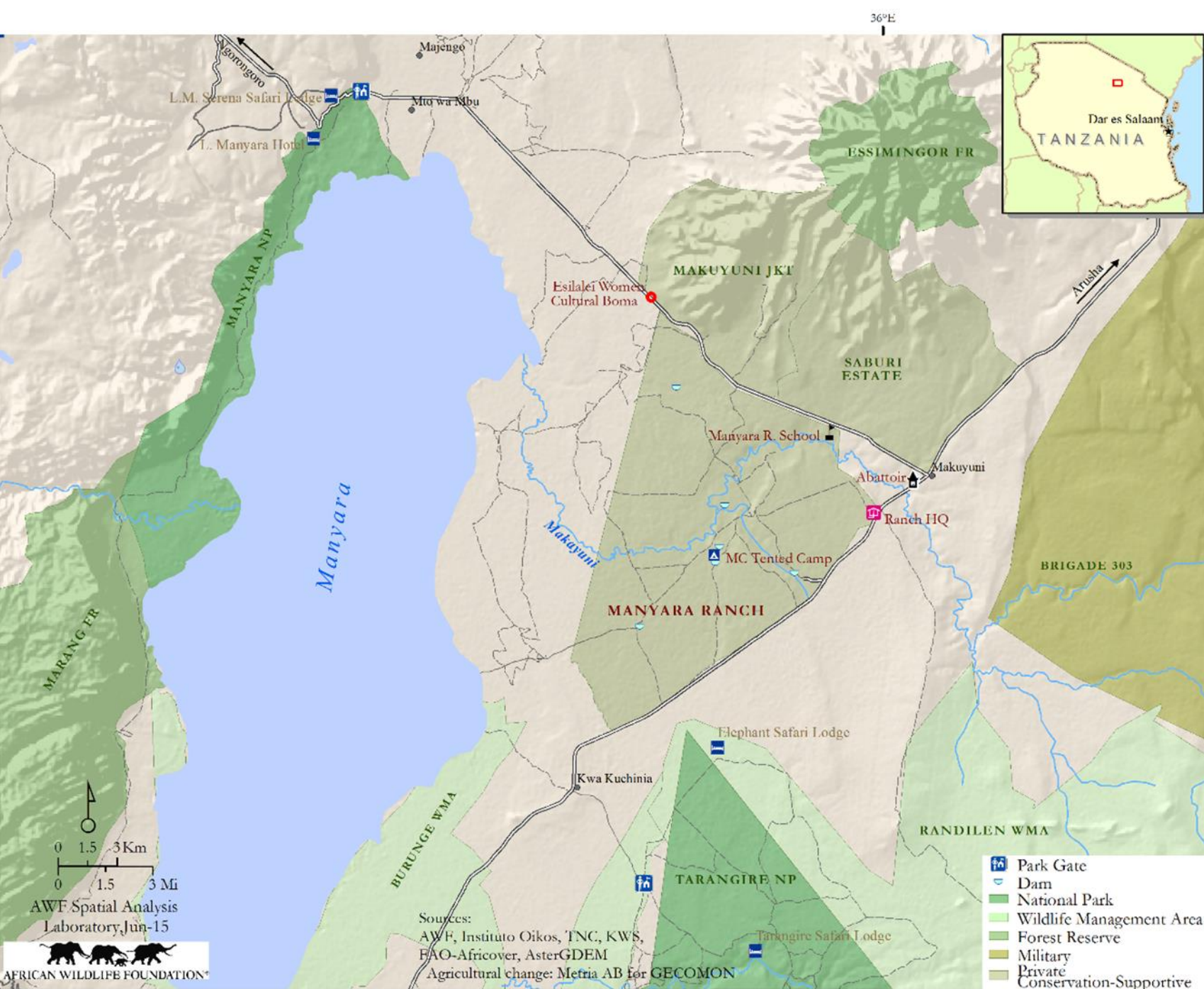




# Manyara Ranch

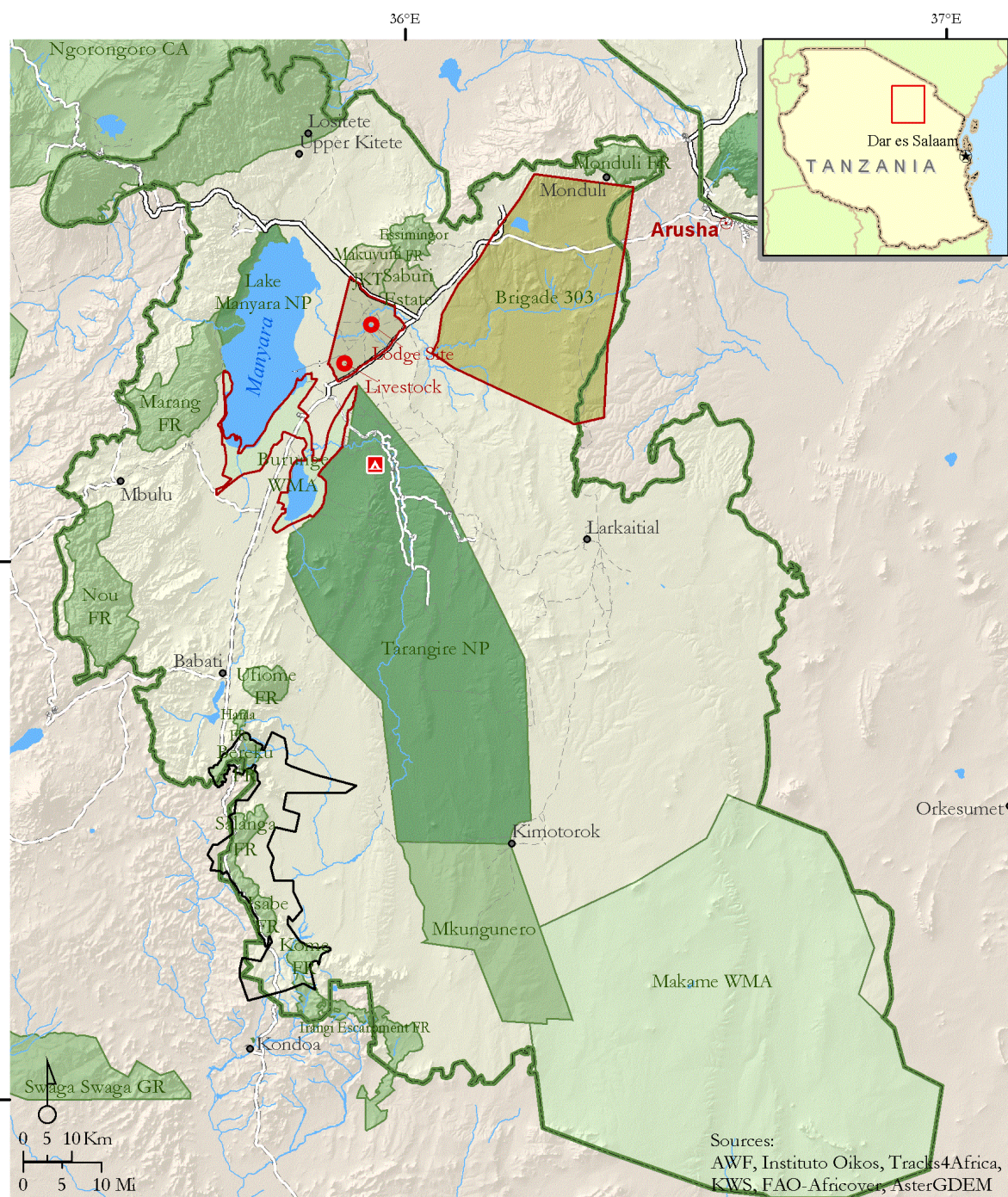






- Size - 45,000 acres
- Predominantly bushed grassland
- Dominated by Acacia species
- Bi modal rainfall pattern
- Average annual rainfall - 700ml
- Ranch supported over 5000 head of cattle with wildlife
- Not fenced





## Maasai-Steppe Heartland: Regional Context

*Manyara Ranch is a  
critical property in  
Northern Tanzania's  
most important  
wildlife corridor.*

- AWF Office
- Village
- AWF Conservation Action 2010-11
- ▭ Land Conservation
- ▭ Kolo Hills Carbon Project
- Conservation Enterprise
- ▲ Predator Research & Conservation
- ▭ AWF Heartland
- ▭ National Park
- ▭ Wildlife Management Area
- ▭ Military Range
- ▭ Other Protected Area
- ▭ Communal/Private Conservation-Supportive

Sources:  
AWF, Instituto Oikos, Tracks4Africa,  
KWS, FAO-Africover, AsterGDEM



# History

- Masaai Grazing Lands
- George Damm (1954 – 1971)
- NARCO (1971 – 2001)
- Tanzania Land Conservation Trust  
(2001 to date)







- Governance
- Management
- Community
- Wildlife
- Tourism
- Livestock



# Governance







Good idea in Principal but **Badly** Implemented



# Management



© Filipe DeAndrade

- General Manager – Fidelis OleKashe
- Livestock Manager – Lemaly OleKibriti
- Plan to create the following junior management positions:
  - Estate / maintenance Manager
  - Tourism Manager
  - Community Liaison Manager





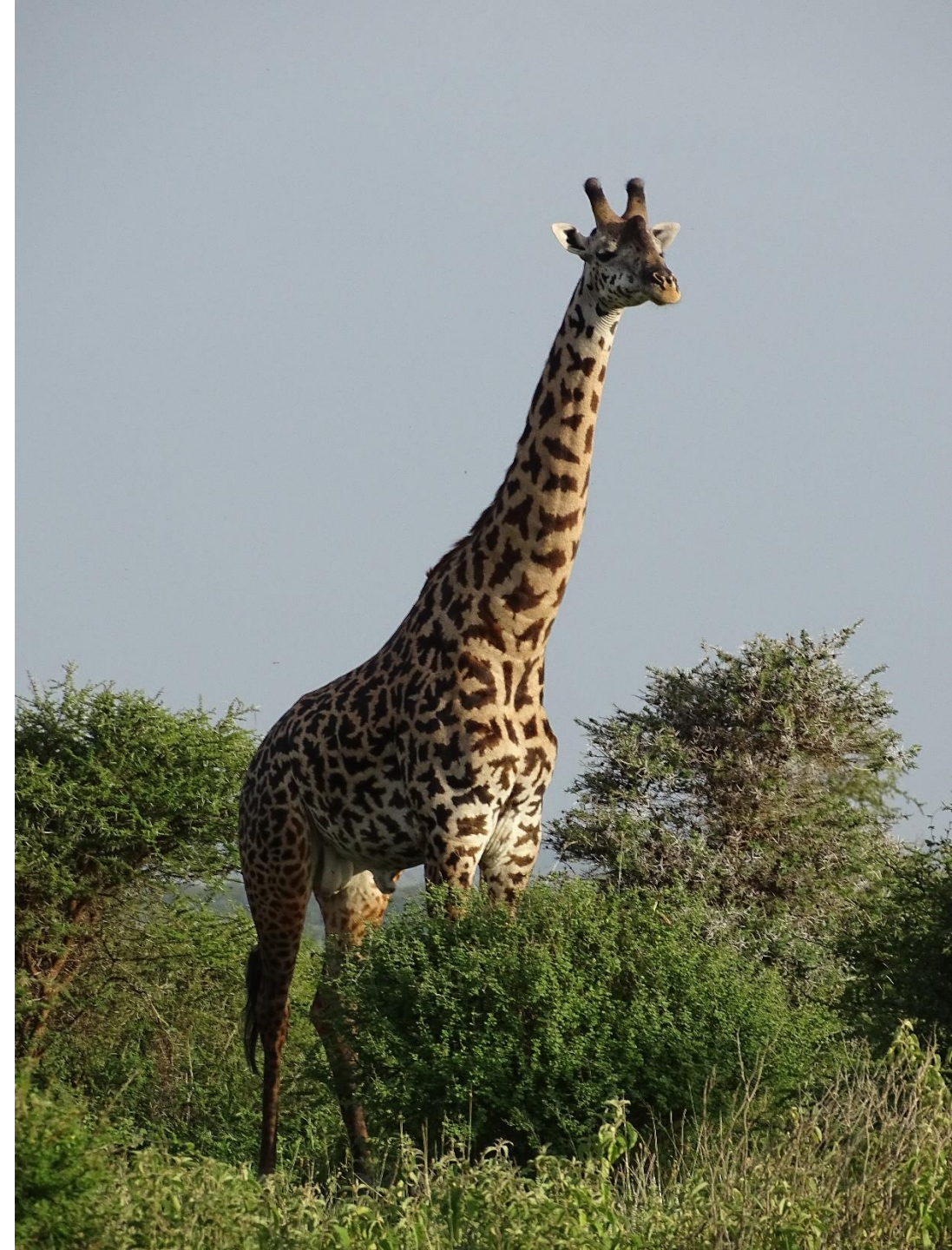
# Wildlife

Species	Estimated Population
Buffalo	106
Dik dik	500
Eland	99
Elephant	130
Giraffe	331
Grants gazelle	289
Impala	1208
Leopard	10
Lesser kudu	77
Lion	18
Ostrich	120
Spotted hyaena	30
Striped hyaena	20
Thompsons gazelle	207
Warthog	236
Waterbuck	32
Wildebeest	1385
Zebra	3780



*‘Manyara Ranch giraffe have the highest reproductive rate of any area in the ecosystem, and Manyara Ranch provides recruits that sustain the ecosystem’s giraffe metapopulation.’*

Derek Lee – Wildlife Nature Institute







*The Tarangire – Manyara ecosystem hosts the third largest wildebeest migration in Africa – about 6,000 – Manyara Ranch is critical to maintaining this migration route*



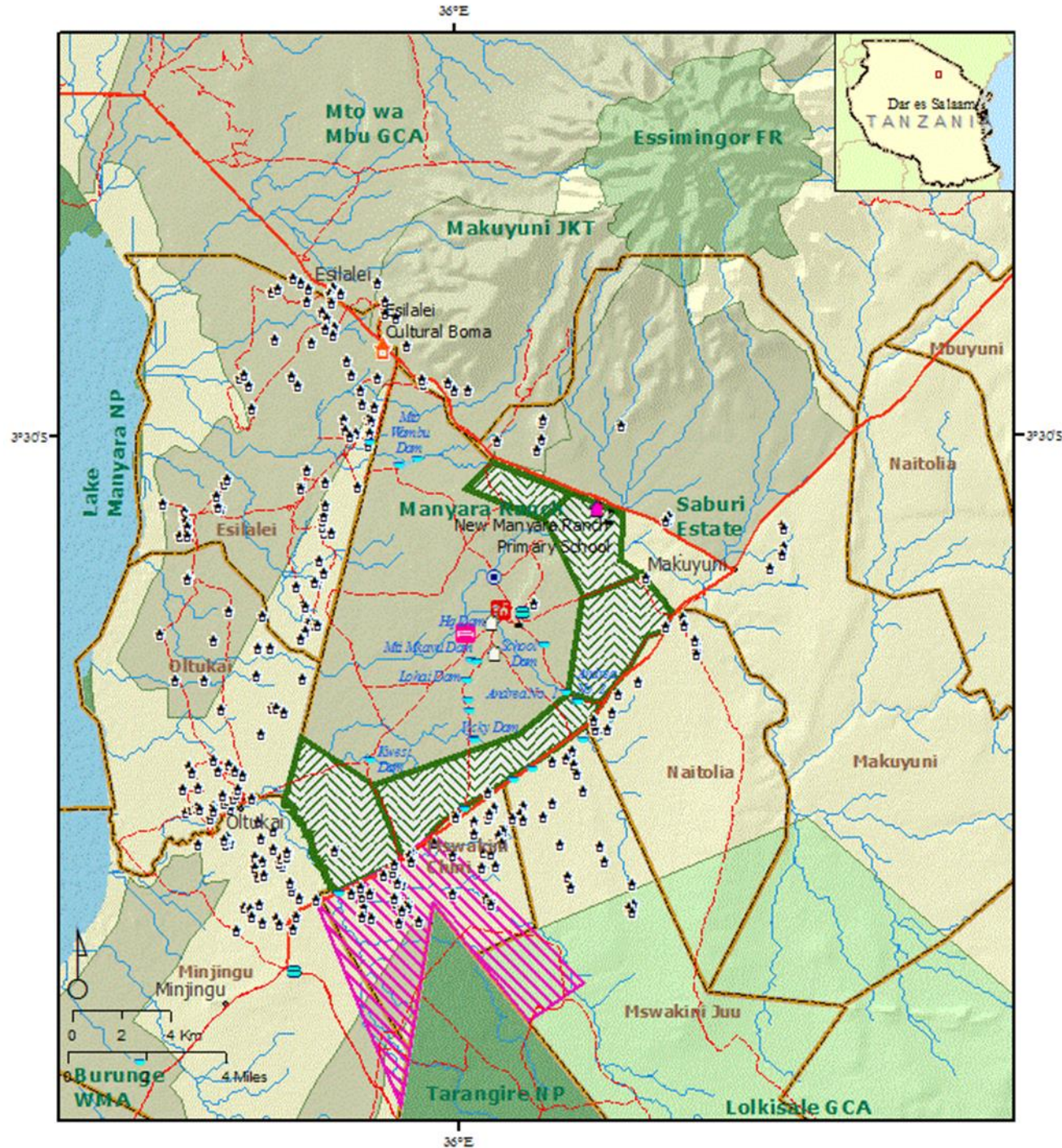




# Community







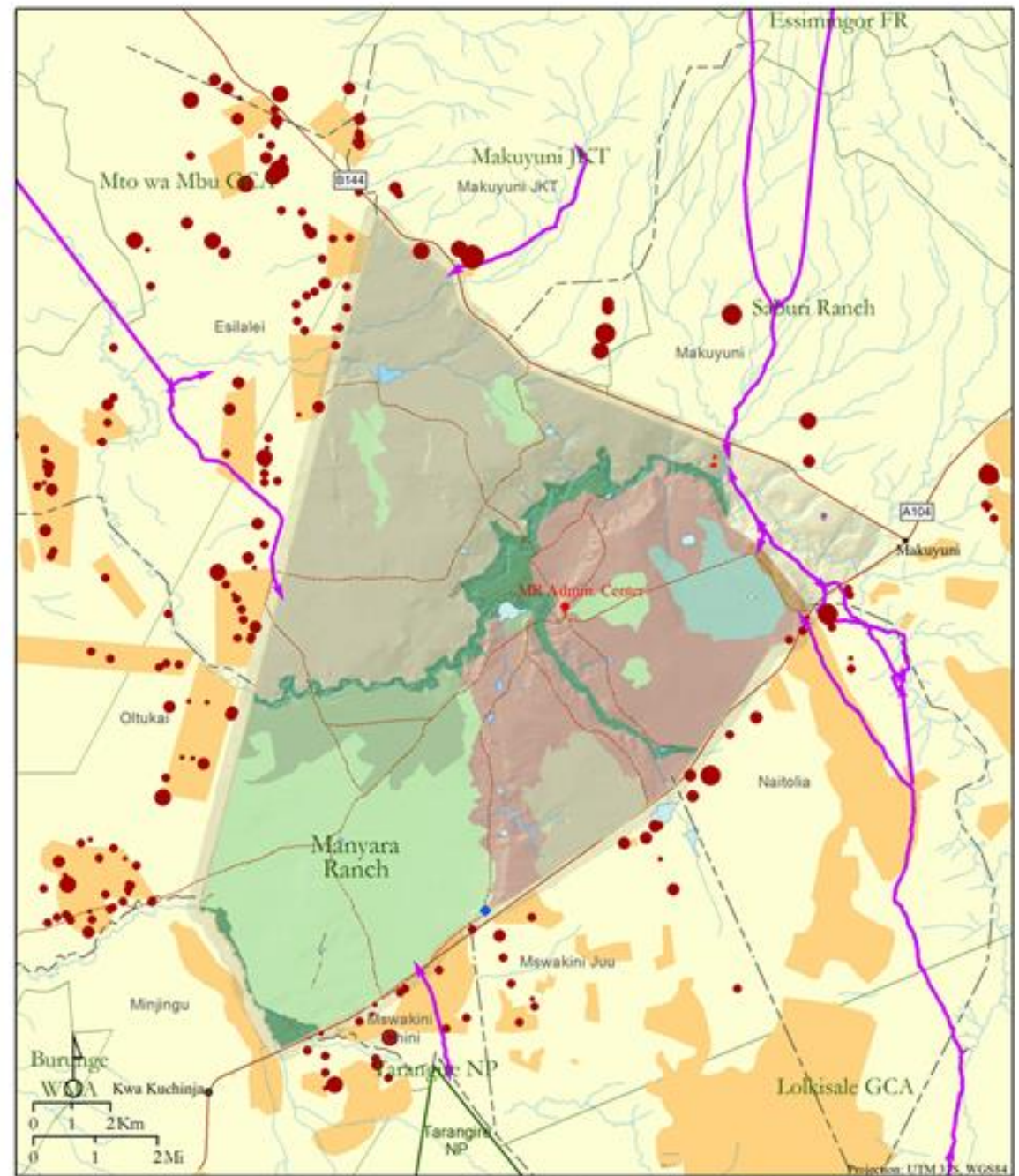
# KEEP Project: Landuse and Infrastructure

Sources:  
Monduli District, AWF, Instituto Oikos,  
ESRI/USGS, FAO-Africover.

AWF Spatial Analysis  
Laboratory Sep-07







Manyara Ranch: Vegetation Zones and Boma/Livestock Distribution



# Community Engagement

Advisory Committee

Employment - over 90%

Livestock Improvement

Dam repairs

Support for Community  
events and Functions





# Tourism

Mount Kilimanjaro

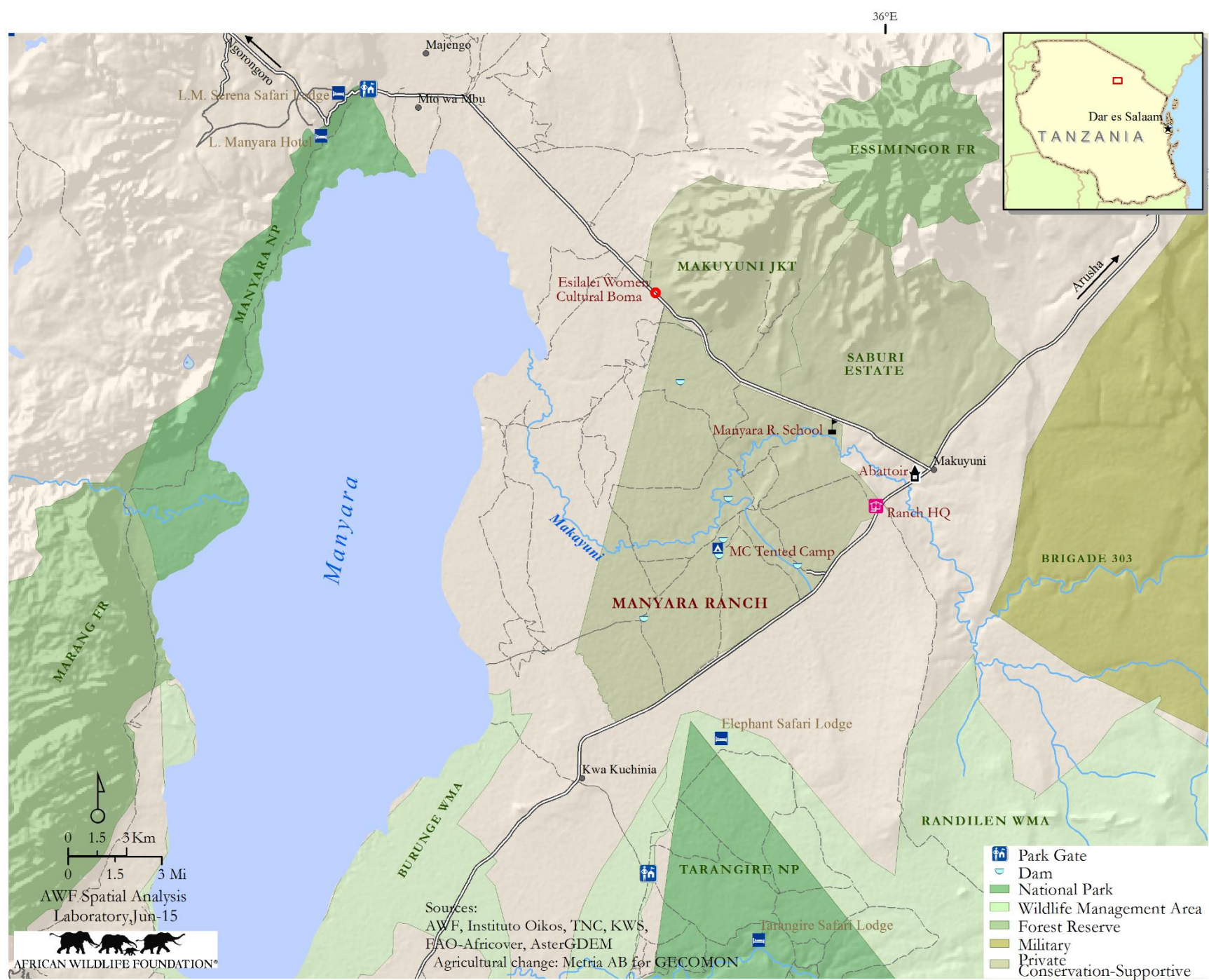


Ngorongoro Crater



Manyara Ranch is situated in the middle of one of the busiest tourism regions on the continent







- Huge Potential for Tourism on Manyara Ranch
- Should be main source of revenue
- BIG mistake to give a single operator exclusive rights
- Needs to be rectified to allow development of diverse tourism products
- Will have to be carefully managed







# LIVESTOCK

Herd of 720 Boran and Boran cross cattle

Imported Stock from Kenya (Ol Pejeta)

Put in boma's at night and herded during the day









# Private Wildlife Ranching in Tanzania

## **Pro's**

- Well developed Tourism Industry
- Can get long term leases (up to 99 years) which are regarded as fairly secure
- High Productivity – 5 to 9 LSU per acre
- Can do Hunting as well as Photographic Tourism
- Can conduct activities that are not easy to do in National Parks i.e. night drives, walking, horse back etc.

## **Con's**

- No ownership of Wildlife
- Wildlife Division are not an easy partner
- Pastoralists / Communities
- Challenging business environment





Thank you!