

PAPILIO (NEW SERIES) # 29

2020 ISSN 2372-9449



BUTTERFLIES OF THE SOUTHERN ROCKY MOUNTAINS AREA, AND THEIR NATURAL HISTORY AND BEHAVIOR: PHOTOS OF MOSTLY EGGS LARVAE PUPAE. PART II PAPILIONIDAE, PIERIDAE, NYMPHALIDAE (LIBYTHEINAE TO SATYRINAE).

James A. Scott

These four issues of Papilio (New Series) are photos for my book “Butterflies of the Southern Rocky Mts. Area, and their Natural History and Behavior”, showing some adults but mostly early stages (eggs, 1st-stage, mature larvae, and pupae) of as many of the species as possible, primarily from the Southern Rockies area (I added a few other interesting species that do not occur in the area). They have been cropped and downsized to illustrate just the butterflies and conserve kilobytes, rather than serve as artistic images. They are arranged by evolutionary relationship, as in the book text.

Localities of photos are Colorado especially the Denver/Front Range area, unless noted. Most were taken by J. Scott, some by others.

Abbreviations: M=male, F=female, A=adult (difficult to determine sex), E=egg, L=larva (L1=1st-stage, L2=2nd-stage, L3=3rd-stage, L4=4th-stage, L5=5th-stage usually mature, L6=6th stage mature), P=pupa

Papilionidae, Parnassinae



Parnassius corybas (or *P. smintheus*) *smintheus* F, E, L1, L5, P, P

Papilionidae, Papilioninae, Papilionini



Papilio cresphontes L5 Neb.



Papilio multicaudata multicaudata F, L1, L5, L5 prepupa, P, P



Papilio glaucus glaucus Delaware, L5, P. *glaucus rutulus* E, L1, L5 Wyo.



Papilio eurymedon L1, L2



Papilio troilus troilus Delaware L3, L5



Papilio indra indra M, L1, L3, L5



Papilio polyxenes M, E, L1, L3, L5 showing osmeteria, L5, L5, P Minn., P



Papilio zelicaon L5 Neb., 2L5, P Neb.

Pieridae, Coliadinae



Nathalis iole E, L1, L5, P, 2P, 2P emerging



Colias meadii meadii L1, L5, P



Colias alexandra M, E



Colias eurytheme E, L1, L5, L5, P



Colias philodice philodice Minn. M & ambush bug, *C. philodice eriphyle*: L1, L5, L5, P



Colias scudderi scudderi M, F, E, L1, L5, L5, P

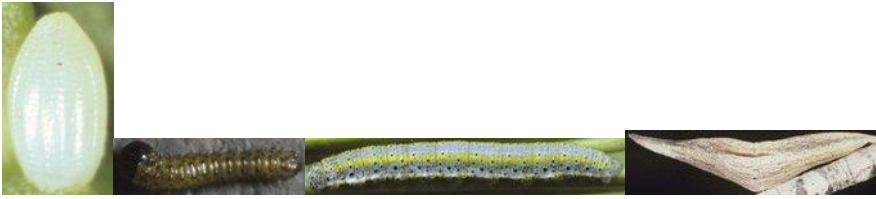


Phoebe sennae marcellina L5 Neb.

Pieridae, Pierinae



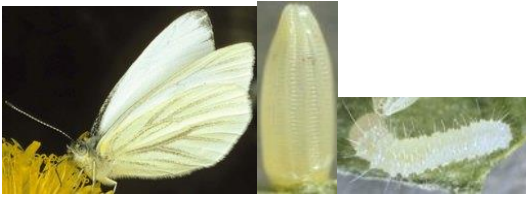
Euchloe ausonides coloradensis E, E, L1, L5, P



Euchloe olympia E, L1, L5, P Ontario



Neophasia menapia menapia F, F, E



Pieris "marginalis" mcdunnoughi M, E, L1



Pieris rapae rapae E, L1, L5, P, P



Pontia chloridice beckerii Mesa Co. L5, P



Pontia protodice E, L1, L5, P



Pontia callidice form calyce M, E, L1, L5, P



Pontia sisymbrii elivata E, L3

Nymphalidae, Libytheinae



Libythea (Libytheana) carinenta bachmannii Minn. F

Nymphalidae, Danainae



Danaus plexippus plexippus E, L1, L5, P, P



Danaus gilippus thersippus L1, L5, P, P

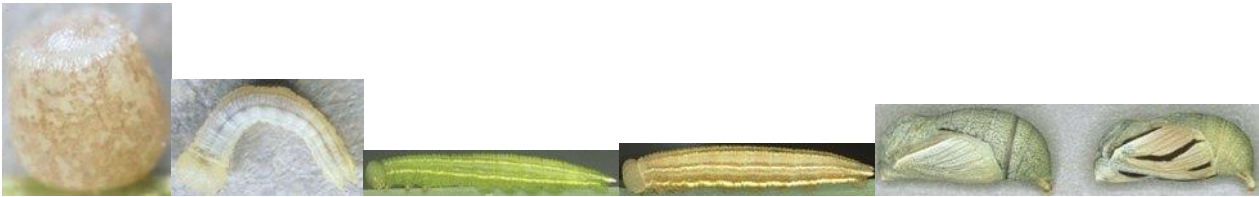
Nymphalidae, Satyrinae



Lethe ("Satyrodes") eurydice fumosus MF, E, L1 Minn., L5, P



Coenonympha tullia ochracea MF, E, L1



Coenonympha tullia yontocket Del Norte Co. California E, L1, L5, L5, P, P



Cyllopsis pertepida dorothea F, E, L1, 2L5 green form, P



Cercyonis pegala nephele M, E, L1, L5, P, L5 head capsule



Cercyonis meadii meadii FM, E, L1



Cercyonis oetus charon MF, E, P



Erebia callias F, E, L1, L5, L5, P, P



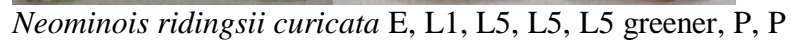
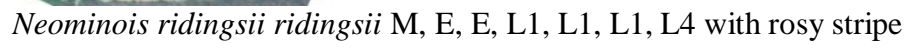
Erebia epipsodea F (form brucei), F, F, E, L1, L5, L5, P, P



Erebia magdalena magdalena M, E, L1, ~L3, ~L3, L5, P too dark



Erebia stubbendorfii ("theano") Gilpin Co. M, ~L3





Neominois ridingsii wyomingo F, E, L1, L1, L5, L5, L5 slightly greener, P new, P, P, P



Oeneis uhleri uhleri E, L1, L3



Oeneis chryxus MF, M neotype, E, E, L1, L1, L1, L5 Utah, L5, L5, P Utah, P, P



Oeneis calais altacordillera F, M, M 10500' Medicine Bow Mts. WY, E, L1, L5, L5, L5, L5 head, P, P, P



Oeneis alberta alberta M, F, E, 2L1, L1, L5, L5, L5, P, P



Oeneis bore taygete L4 Manitoba



Oeneis jutta reducta F, F



Oeneis melissa lucilla M, MF, E, L1, L3, L4



Oeneis polixenes brucei M, E, E, L1, L5