



Artist Statement

Erin Doherty

I grew up on a small island town in Alaska surrounded by the ocean. My experiences and memories of it inspire me everyday. The ocean is an unpredictable force, and its constant transitions between turbulent and flat-calm waters dictate daily life of the people and landscape around it. Just as the ocean has had a lasting impact on me, family is also an essential component to my life and a source of inspiration. I connect these two separate, but fundamental elements by blending Celtic knots- representing family, with imagery found in the ocean. By blending these seemingly disparate themes together, I bridge a gap between origin and tradition.

My coil built sculptures take advantage of the versatility of clay to achieve large volumes, while my carved slabs depict motifs that incorporate layered surface designs. The time consuming and repetitive action in the studio brings me a sense of peace and self-awareness, while challenging me to stay attentive and precise.

My ceramic work blends art and nature to instill a sense of wonder and curiosity for the ocean in people's minds. The combination of literal and abstract illustrations trigger moments of nostalgia that reference past experiences and memories. My intimate, handmade artwork is designed to bring beauty and serenity to everyday life.

Technical Statement

Erin Doherty

I use clay and multiple building techniques to arrive at my finished product. I use DAM (Denver Art Museum) stoneware clay designed by Del Harrow. This clay involves many different materials that provides stability and allows for larger, complicated structures and strength for creating very thin and large tiles. I add fine and coarse grog, paper pulp, and nylon fiber to increase this strength as well. Most of my pieces are fired in a reduction gas kiln that pulls the iron to the surface of the clay to achieve a reddish tint. This process involves choking the kiln of oxygen and produces rich glaze colors and affects, often very different than the same glaze in an oxidation firing.

For my tile pieces I hand rolled each slab then used reductive and additive processes to give it dimension and texture. Each slab is then bisque fired, glazed, and fired again in its designated kiln. To make the frames and backings so they would be easily hung, the tiles were then epoxied to birch plywood and wood glue was used to secure the red cedar frame. D-rings and picture wire is the hanging mechanism on the backs. My Sea Sculptures are coil built to provide stability and to create thin, even walls. The predominant glaze recipe used is 50% gerstly borate with 50% plastic vitrox with a variety of colorants added.

<u>Title</u>	<u>Media</u>	<u>Original Format</u>
Figure 1: Overall Capstone Show	Ceramic	
Figure 2: All-over Jelly Print Celtic Knot 1, Bull Kelp Triptych 1, Sea Anemone, & Ocean Dew	Ceramic	From top to bottom: a) All-over Jelly Print Celtic Knot 1 – 9.5" x 10", b) Bull Kelp Triptych 1 – 29" x 21.25", c) Sea Anemone – 12.5" x 16", d) Ocean Dew – 15" x 10.5"
Figure 3: Ice Melt, Red Jelly, All-over Jelly Print Celtic Knot 2, & Glacier Stream	Ceramic	From top to bottom: a) Ice Melt – 15" x 10.5", b) Red Jelly – 20" x 16", c) All-over Jelly Print Celtic Knot 2 – 15" x 14", d) Glacier Stream – 12.5" x 9.5"
Figure 4: Northern Lights, Octopus, Bull Kelp Triptych 2, & Sea Urchin	Ceramic	From top to bottom: a) Northern Lights – 13" x 10.5", b) Octopus – 10" x 12", c) Bull Kelp Triptych 2 – 21" x 25", d) Sea Urchin – 9.25" x 8.5"
Figure 5: Sea Sculpture 1	Ceramic	13" x 13" x 7.5"
Figure 6: Sea Sculpture 2	Ceramic	20" x 18" x 8"
Figure 7: Sea Sculpture 3	Ceramic	14" x 13" x 12"
Figure 8: Sea Anemone	Ceramic	12.5" x 16"
Figure 9: Bull Kelp Triptych 1	Ceramic	29" x 21.25"
Figure 10: Bull Kelp Triptych 2	Ceramic	21" x 25"
Figure 11: Red Jelly	Ceramic	20" x 16"
Figure 12: Sea Urchin (detail)	Ceramic	9.25" x 8.5"
Figure 13: Glacier Stream (detail)	Ceramic	12.5" x 9.5"
Figure 14: Ocean Dew (detail)	Ceramic	15" x 10.5"
Figure 15: All-over Jelly Print Celtic Knot 2	Ceramic	15" x 14"
Figure 16: Octopus	Ceramic	10" x 12"



Figure 1: Overall Capstone Show.

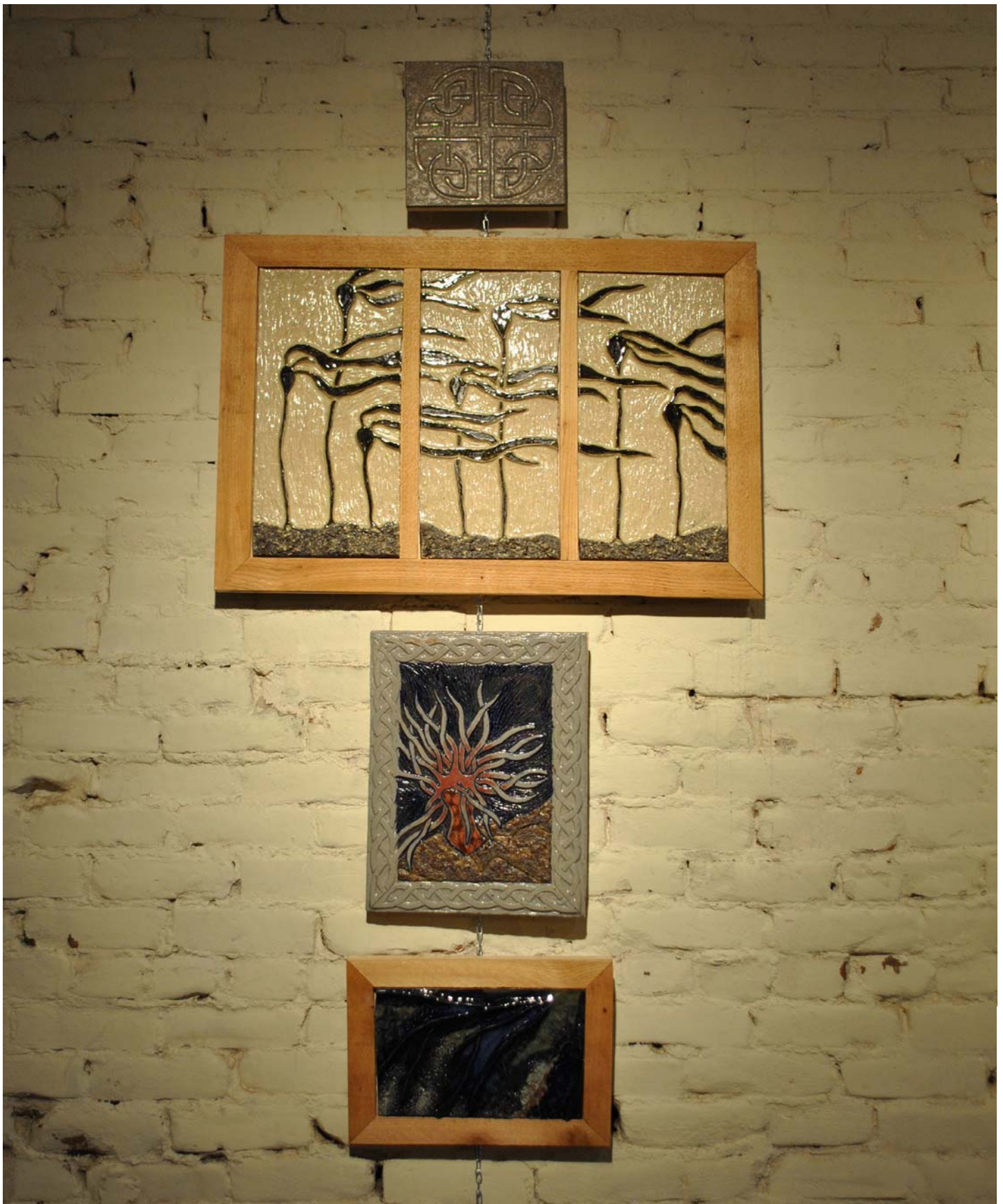


Figure 2: All-over Jelly Print Celtic Knot 1, Bull Kelp Triptych 1, Sea Anemone, & Ocean Dew.

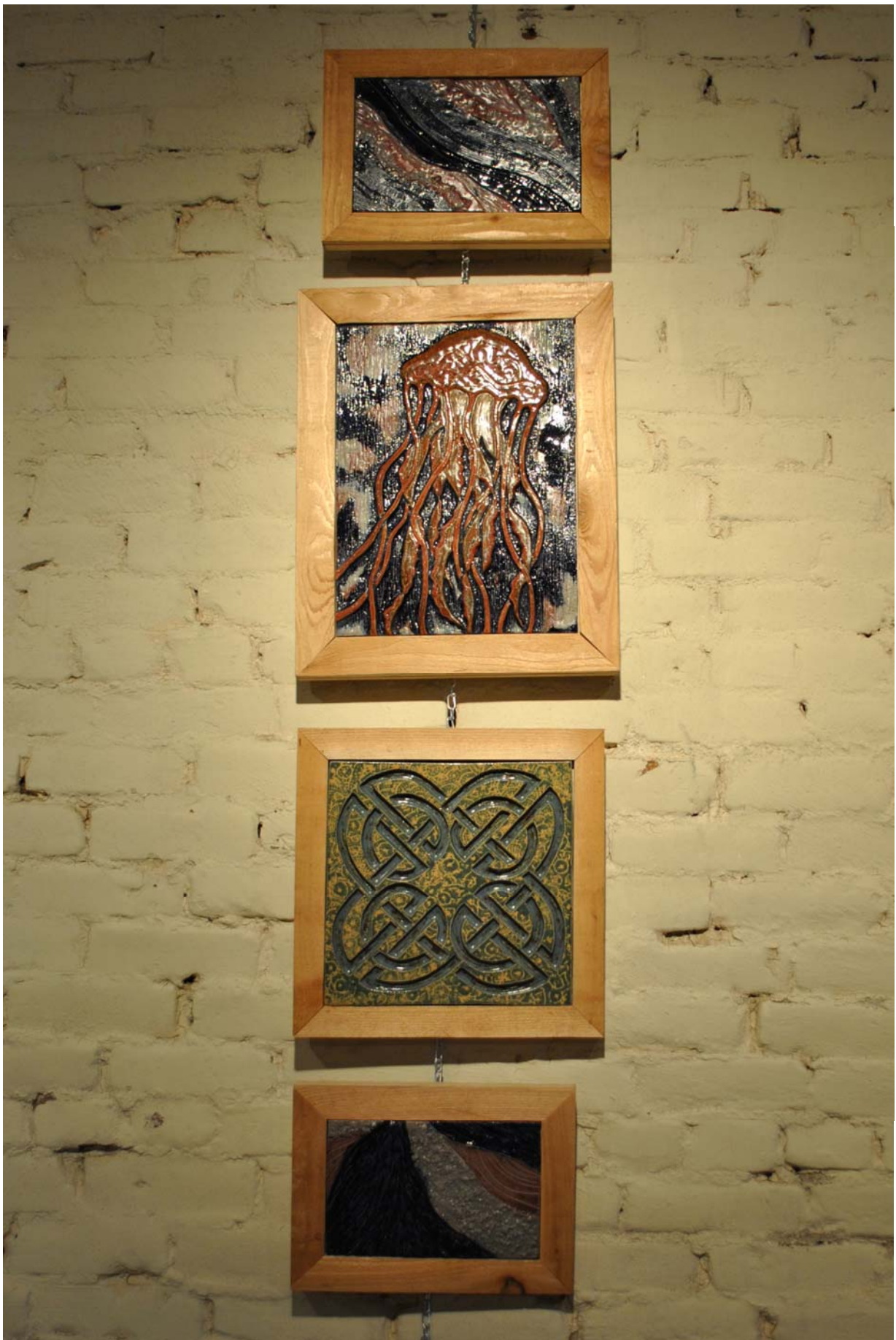


Figure 3: Ice Melt, Red Jelly, All-over Jelly Print Celtic Knot 2, & Glacier Stream.

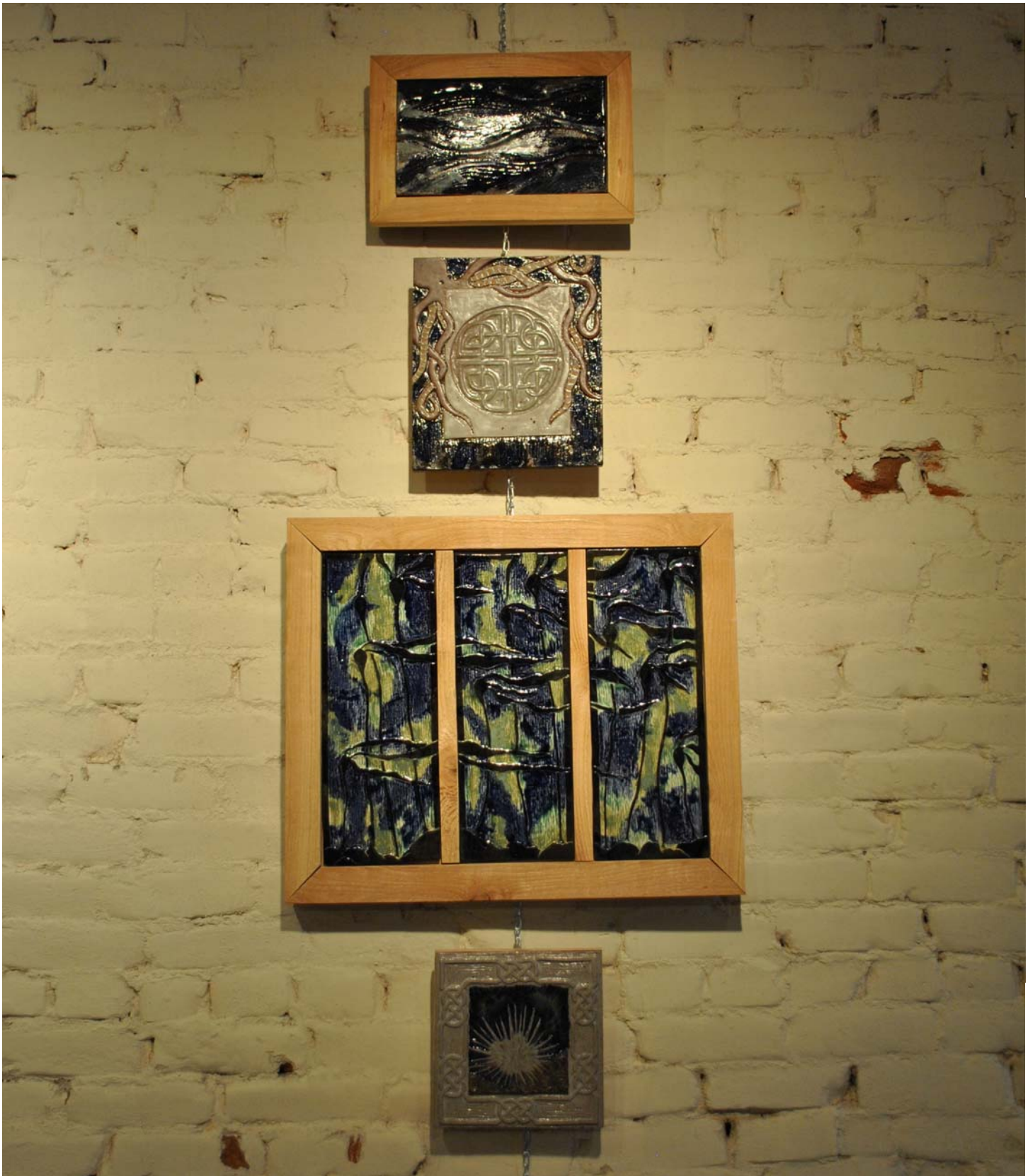


Figure 4: Northern Lights, Octopus, Bull Kelp Triptych 2, & Sea Urchin.



Figure 5: Sea Sculpture 1.



Figure 6: Sea Sculpture 2.



Figure 7: Sea Sculpture 3.



Figure 8: Sea Anemone.



Figure 9: Bull Kelp Triptych 1.



Figure 10: Bull Kelp Triptych 2.



Figure 11: Red Jelly.



Figure 12: Sea Urchin (detail).

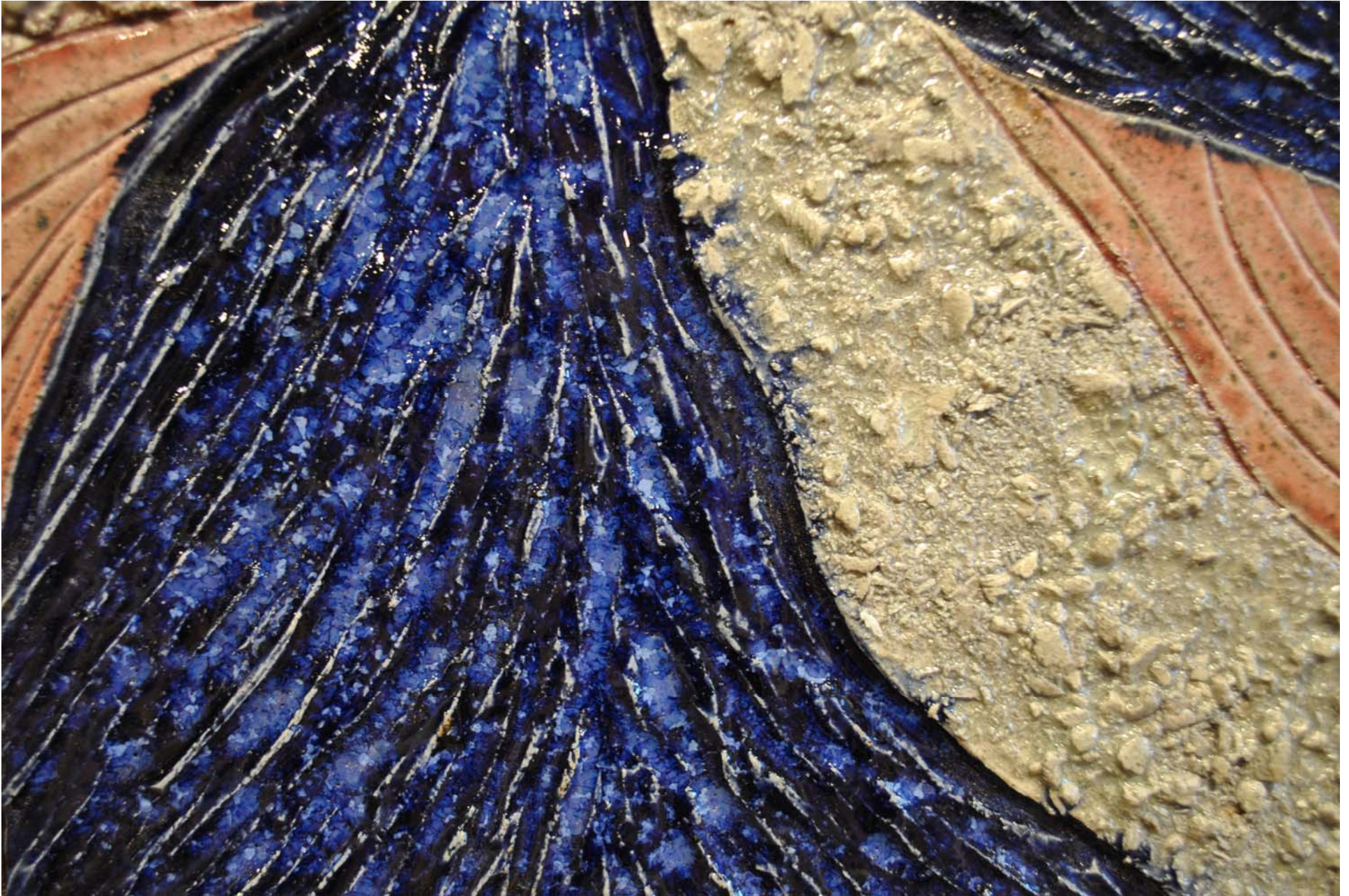


Figure 13: Glacier Stream (detail).



Figure 14: Ocean Dew (detail).



Figure 15: All-over Jelly Print Celtic Knot 2.



Figure 16: Octopus.